

T H E
MONSTER
MAKERS



2002 - 2004
PRODUCT CATALOG

Greetings



Greetings Fellow Monster Makers:

Summer 2002

It is with great pleasure and excitement that we bring to you the new Monster Makers Product Catalog! For many of you, this is likely your first introduction to our hardcopy catalog. Our virtual copy of the previous catalog has circulated so well that we debated as to whether or not it was necessary to go to press with a new edition. In the end though, we decided that it would be wise to do both. As small and portable as computers are now, there is nothing as convenient as being able to sit down at any time or place and go directly to the page you need without worrying if your notebook is sufficiently charged. (For those hopelessly paper challenged, we encourage you to browse our website which is now set up for secure, online ordering.)

And of course we are not knocking computers. For without one, you would not be holding this catalog in your hand. Nor gazing at what we hope, is one of the most attractive catalog covers in the industry. If we dare say so ourselves. For us, like most of our industry friends, the computer is just another excellent tool in the arsenal of effect artists and one that we embrace as a means to efficiently and effectively express our vision.

But when it comes to real 3-D, computers will only take you so far. And that is where we come in. We like to think of ourselves as the supply source for real 3-D artists of all kinds. While we couldn't possibly have everything, you'll find most things that you need to bring to life in clay, rubber or plastic, those fantastic characters that we know are lurking inside your mind just waiting to be unleashed! So why not get busy and start unleashing? You now have the means and materials at your disposal. And we have the knowledge to help you make it happen. Give us a call anytime during business hours, Monday - Thursday: 9:30 AM to 5:00 PM. We will be glad to help you tackle even the most far fetched projects of your imagination. We hope to hear from you soon. And as always.... Happy Monster Making!

Arnold Goldman (President)

Kimberly Goldman (Vice President)

THE MONSTER MAKERS

7305 Detroit Ave.
Cleveland, Ohio 44102

Order Line:

(216) 651-7739

Fax: (216) 631-4329

e-mail:

sales@monstermakers.com

Endless thanks to: Mark Alfrey, Chris Alexander, Dan Anderson, Tom Bacho, Michael Bannon, Roland Blancaffor, Greg Butler, Cinovation Studios, Ken Culver, Sam Dalessandro, Steve "Crazy D" DiRuggiero, Bill Fesh, Bill Fleming, Chris Gallaher, Scott Gamble, John Goers, Doug Goins, Ray and Doretta Goldman, Jim Groman, Doug Henderson, Kevin Imbrescia, Kevin James, KNB F/X, Tom Kuebler, Jim Lawrence, Joe Lester, Greg McDougall, Masters F/X, Tom McLaughlin, Phillip and Scott Morris, Jim Mravec, Naimies Theatrical Supply, Optic Nerve, John Pinkerton, Alex Piotrowski, Lee Romaire, Tom Savini, Dick Smith, Rick Stern, Andy Stewart, Dave Tanno, Dan Thompson, PJ "Crazy P" Toomey, Big Al Tuskes and Family, Dave Wells, Wreckless Abandon Studios, Garrett Zunt and to the newest little Monster: Ava Isabella Goldman. If we accidentally forgot you, you know we still love ya!

About the Cover: Legendary computer artist Bill Fleming's Mystic takes center stage as the icon of creative inspiration. Back Cover photos, counterclockwise from top: Monster Makers Animatronic Witches, Doug Henderson's Dagda Make-up, Tom Kuebler's Silicone Vampire, Joe Lester's Cyborg, Fantastic Dentistry Cover, Beginners Mask Kit, Arnold's famous Immortal Mask, Movie Monsters Cover, PJ and Steve do a lilecast, a Mark Alfrey Sculpt, Tom Kuebler's Gothic Vampire, Kevin James applying a baldcap, a John Pinkerton foam appliance, Dan Anderson's Ham Haus, Dental Acrylic Set, Kragmorton, Wreckless Abandon foam pig, Make-up brush Set, Wreckless Abandon foam wolf, Wreckless Abandon Sculpting, Latex Foam Kit, Glyptic Sculpting Tool Set, Standard Dental Kit and a very tiny Wreckless Abandon scene from "Vultureville."

Please note that we have a \$35 minimum before shipping on all orders except for books and videos.

Table of Contents

Greetings - 1

Table of Contents - 2

Sculpting Compounds - 3

Sculpting Armatures - 4

Sculpting Tools - 5,6,7,8

Mold Making Accessories - 9,10

Rigid Mold Making Compounds - 11

Elastigel™ & High Temp Epoxies - 12

Latex Compounds & Coatings - 13,14

Latex Foam & Components 15,16,17

Latex Foam Appliance Kits - 18

Latex Mask-Making Kits - 19,20

Lifecasting Kits - 21

Lifecasting Supplies - 22

Books - 23,24

Videos - 25,26

Urethane Compounds - 27

Airbrush & Accessories - 28

Silicones & Additives - 29

Gelatin and Components - 30

Slime Compounds & Components - 31

Blood Kits and Components - 32

Dental Supplies & Kits - 33, 34, 35

Make-up Supplies - 36

Eyes and Miscellaneous - 37

Mold Releases - 38

Order Form - 39

Terms and Conditions - 40

Customer Gallery - 41, 42, 43, 44, 45

Company Gallery - 46

Useful Info and Photo Credits - 47

Educational Resources - 48

Monster Makers Oil Based Clay

Our premium quality, reusable clay similar in feel to Roma Plastilina. It has a smooth consistency, softens easily in the microwave or conventional oven, but without the noxious odor or sulfur separation characteristic of Roma. An ideal product for creating detailed mask sculptures. Monster Makers Oil Based Clay smooths nicely, is sulfur free and can be melted to a pourable consistency for pouring clay copies of body parts from alginate molds. Also works great for the donor sculpting technique where facial features from lifecasts are grafted together to form a completely new character. It is also easy to clean from stone molds! Comes in a medium, tan tone color.



MMOBC5	5 lb. Block	\$11.25
MMOBC10	10 lb. Block	\$22.50
MMOBC20	20 lb. Block	\$45.00

Castilene

A new, precision modeling wax that is very hard at room temperature, but softens easily due to its unusually low melting point. Castilene is very popular with model and toy makers because of its light weight (40% lighter than an equal volume of oil based clay). Its hardness allows for build-ups without an armature. Once it is heated, Castilene sculpts very much like clay and softens easily in a microwave, hot water or heat lamp. Castilene is also a great medium to use for bronze casting since it can be burned out in lost wax molds. This eliminates the need for creating a secondary mold. We like this stuff. Comes in a Green color. Smells nice too! Can also be melted for clay pours.



CMW3M	3 lb. Block (Medium Hard)	\$21
CMW30M	Case (10) 3lb. Blocks	\$200

Apoxie Sculpt

This very useful epoxy clay offers economy as well as performance, strength and waterproof permanence. A 2-part product that when mixed gives a working time of about 2 hours. Cures hard overnight with 0% shrinkage. Apoxie Sculpt strongly adheres to almost any clean surface (except silicone). Can be tooled, feathered, sanded, tapped, lathed or otherwise. Offers simple water clean-up and can be smoothed with water! Perfect for the underskulls of mechanical creatures. Works great for leaky sinks too. Available in a natural cream color.



AES1	1 lb. 1/2 lbs. each (A/B)	\$12.50
AES4	5 lbs. 2.5 lbs. each (A/B)	\$27.50
AES20	20 lbs. 10 lbs. each (A/B)	\$100

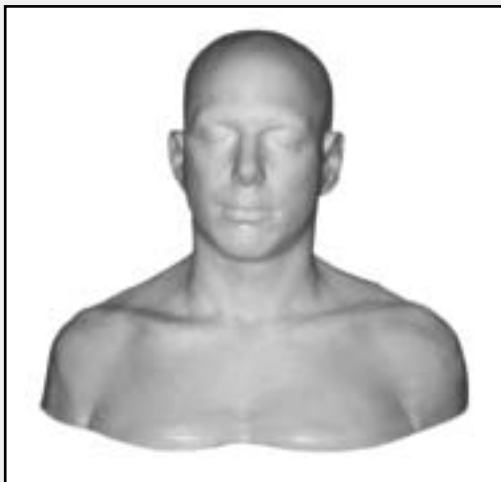
EM-217 (Wed Clay)

Wed clay has become quite popular in the film industry for creating large, detailed sculptures. Allows for rapid build-up and quicker turn over of the finished sculpted piece. Although it is a water based clay, Wed clay dries very slowly and has many of the same sculpting qualities as oil clay. Requires a spray bottle of water to maintain moistness. Can be used for mask sculptures but is not considered reusable. Also favored by mold makers for retaining walls, due to its firmness and slow drying characteristics.



EM21750	50 lb. Box	\$23.50
----------------	-------------------	----------------

Deluxe Full Head Armature

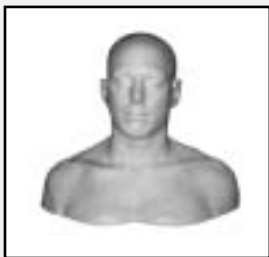


Our very popular, ready made sculpting armature is inexpensive to ship, shatterproof (unlike stone armatures) and taken directly from a lifecast. Works beautifully as a pre-made sculpting base for small to large mask sculptures. Cast in lightweight, but durable polyfoam. Weights approximately 5 lbs. Measures 18" H x 17" W x 10" D. Works right out of the box! Saves you time and money and is reusable.

DFHA1 Deluxe Full Head Armature \$49.95

Miniature Full Head Armature

Looks familiar? This is a shrunken version of our Deluxe full Head Armature. We've had lots of requests for a miniature head form that can be used for preproduction concept designs. The Mini full head armature is a fully proportional model taken from our original lifecast but reduced to slightly less than 50% of its original size. A real time saver when you need to quickly see how your designs will look in 3-D. The Mini Full Head Armature is approximately 8" Tall. Cast in White Hydrocal.



MFHA1 Miniature Full Head Armature \$14.95



A latex, master model of Snarly sits atop one of our Deluxe Full Head Armature forms. And it fits like a glove! Also works great for mask display.

Half Head Armature

If you are looking for a sculpting base for creating a half mask or doing some generic foam latex facial prosthetics, then the half head armature is ideal. This is also a lifesize piece that works right out of the box. Measures approximately 9" in height. The Half Head Armature is created from lightweight polyfoam for low-cost shipping and is completely reusable.



HHA1 Half Head Armature \$24.95



Modeling Tool Set

A starters set of six piece Wooden sculpting tools. Works equally well on water or oil based clay mediums. Comes in a waterproof plastic pouch for easy storage.

MTS6

Modeling Tool Set

\$9.95

Basic Studio Tool Set

A good beginning Set of tools for detailing and mold work. Includes 1 Metal Scraper, 1 Large Loop Tool, 1 Wooden Tool, 1 Double Loop Tool, 2 Stainless Steel Double End Dental Tools and 1 Scribing Tool. Packaged in a Waterproof Pouch.

BSTS7

Basic Studio Set

\$14.95



Intermediate Studio Tool Set

A set of ten sculpting and detail tools suitable for a wide variety of sculpting styles. Includes: 4 Wooden Tools, 2 Stainless Steel Double End Dental Tools, 1 Stainless Steel Double End Spatula, 1 scribing Tool, 1 Double End Loop Tool and 1 Large Loop Tool.

ISTS10

Intermediate Tool Set

\$21.50

Professional Studio Tool Set

A 13 piece assortment of detailing, sculpting and mold finishing tools for professionals. Includes: 1 Wooden Shaper, 1 Clay Sponge, 3 Stainless Steel Dental Tools, Two Coated Handle Carving Tools, 2 Wooden tools, 1 Double End Chiseled Loop Carver, 1 Double End Loop Tool, 1 Wire Cutting Tool and One Metal Clay Scraper.

PSTS13

Professional Studio Tool Set

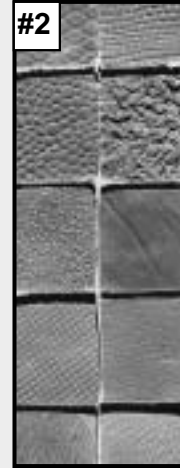
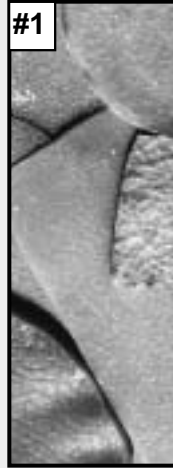
\$34.95

Texture Stamp Kits

We have three excellent sets of texture stamps to choose from. Stamp **Set #1** consists of skin textures ranging from heavy to fine. **Set #2** has some great alien and reptile looking textures. Texture **Set #3** is our newest set with a nice assortment of very interesting creature skins. Each set contains 12 flexible pads which can be used to create realistic looking textures by simply pressing them onto the surface of the clay. Made of durable, long lasting and easy to clean urethane elastomer.



© 2002 Mark Alfrey



PTSK1	Text Stamp Set #1	\$19.95
PTSK2	Text Stamp Set #2	\$19.95
PTSK3	Text Stamp Set #3	\$19.95

Stainless Steel Detail Set

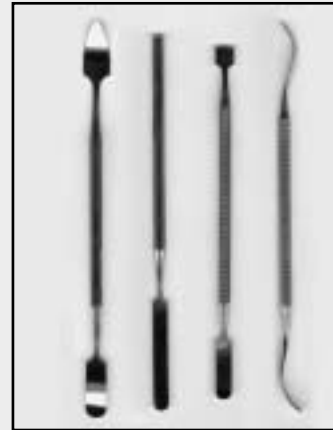


© 2002 Steve DiRuggiero

Also new in our sculpting sets is this nice group of doubled ended, detailing tools. These are specially designed with one end for adding extreme detail to sculptures and the other end for smoothing very tight areas that other tools can't access. Made of long lasting, high grade stainless steel. A nice set at a very nice price. Comes in a waterproof pouch.

SSDC4	4 Detailing Carvers	\$14.95
-------	---------------------	---------

Stainless Steel Spatula Set



Another great new pouch set. Here is a set of very useful spatula shapes for which you'll find all kinds of applications. We have used these for lots of things including mixing, scraping, cutting and sculpting. You'll find even more uses for this handy spatula set. Also made of long lasting stainless steel. Comes in its own waterproof plastic pouch for easy storage.

SS4PS	4 Spatula Set	\$14.95
-------	---------------	---------

Precision Sculpting Tool Set



This is our favorite new tool set. We've custom designed this set with model kit sculptors and detail oriented artists in mind. Each stainless steel tool is made to our specifications and coated with vinyl for maximum comfort. Makes a great addition to any sculpting tool collection. And yes, this is available exclusively from The Monster Makers. Watch for more vinyl handle sets in the future!

PSTS10 **Set of 10 Tools** **\$49.95**

Clay Carvers



Our custom designed carving loops are especially useful for working in tight areas with hard clays and waxes. Each loop has a sharply chiseled edge that leaves behind a perfectly smooth clay area. Each instrument has a large and a small end, measures 7" and is made of the highest quality imported stainless steel. Another tool exclusive from The Monster Makers.

CCST4 **Set of 4 Tools** **\$29.95**

Ball Stylus Tool Kit

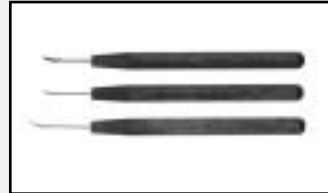
These handy tools are great for applying individual pores and smoothing hard to get to areas. Each ball end is made of stainless steel, treated for hardness and set in a smooth wooden handle.



BSTK1 **Set of 3 Tools** **\$7.50**

Detail Carving Tool Kit

The curved blades of these fine tools are formed and ground to provide a very sharp cutting point that will easily sculpt minute details such as wrinkles and small facial features. The tools



have smooth hardwood handles and are packaged in plastic vials to protect the ends.

DCTK1 **Set of 3 Tools** **\$8.95**


Mini Ribbon Sculpting Tool Kit

Miniature sculpting tools made of fine ribbon steel, heat treated for maximum strength and firmly set in a 1/4" X 5" aluminum handle. Designed to work with clay, wax or any other modeling medium. A nice all around sturdy loop set.



MRST1 **Set of 6 Tools** **\$14.95**

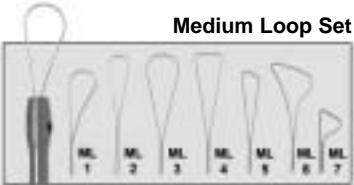
Interchangeable Loop Sets



Small Loop Set

SL 1-4 4 Loop Set \$9.95
Fits Handles D,E

Imagine a customizable wire loop tool that allows you to change it to suit your needs. Imagine no longer. The Glyptic Modeling Tool line is here! We love these not only because they are so well made, but because they make so much sense. If the tip breaks than you simply loosen the set screw and swap out a new tip. Or simply change tips to achieve a different sculpting effect. There are five handles to choose from, each made from high quality, color plated steel. Virtually indestructible. There are also six loop sets from which to choose. This gives you the choice of 47 loop styles ranging from fine to large. You may order individual handles or loop sets. Or choose from our preselected tool sets for your convenience. Each Handle and Tool Set comes with its own Allen Wrench for swapping out loops.



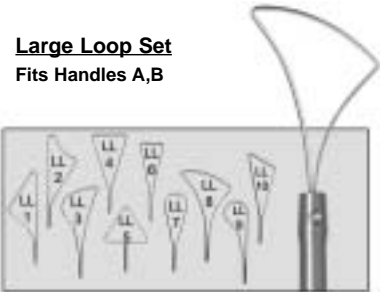
Medium Loop Set

ML 1-7 7 Loop Set \$8.00
Fits Handles B,C,D,E

Tool Sets and Handles

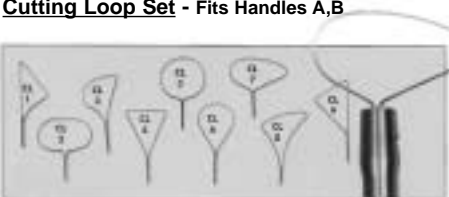
GLTSC	Set 1 (Handle A & Cutting Loop Set)	\$33.00
GLTSL	Set 2 (Handle B & Large Loop Set)	\$28.00
GMTSM	Set 3 (Handle C & Medium Loop Set)	\$20.00
GMTSD	Set 4 (Handle D & Small Loop Set)	\$23.00
GMTSE	Set 5 (Handle E & Small Loop Set)	\$24.00
GCTS5	Complete Tool Set (All handles w/ All Loops)	\$120
GHA1	Heavy Duty Large Handle Only (A)	\$13
GHB1	Regular, Large Handle Only (B)	\$12
GHC1	Medium Handle Only (C)	\$12
GHD1	Small Handle Only (D)	\$13
GHE1	Small Double End Handle Only (E)	\$14

Large Loop Set
Fits Handles A,B

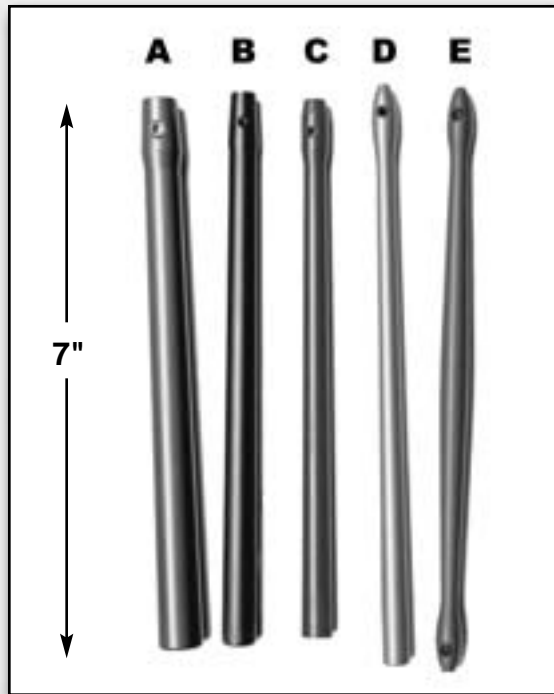


LL 1-10 10 Loop Set \$16.00

Cutting Loop Set - Fits Handles A,B



LL 1-10 9 Loop Set \$20.00



Mini Clay Gun

This little device is a life saver when you need very specific, small extruded shapes. Great for making that cutting edge when doing appliance molds or creating perfect shapes for an angular or robotic mask. Constructed of sturdy zinc alloy and comes with 19 assorted extrusion shape discs. Extrudes almost any type of clay medium. Measures only 5" long.



K45 **1 Gun w/ Discs** **\$10.95**

Clay Shapers

We love this item! No mold maker should be without this nifty little tool. Each clay shaper has a soft rubber end that is angled and chiseled to a fine edge. Perfect for cutting in the critical edge of your clay dividing wall without risking damage to your sculpture. This is one of those rare instances of the perfect tool for the perfect job! Tip #1 is 3/8", Tip #2 is 3/4", Tip #3 is 1-1/4".



CST3 **Set of 3 Shapers** **\$19.95**

Wire Clay Cutting Tool

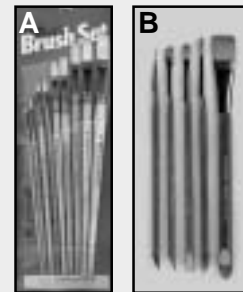
This simple tool makes cutting off even pieces of waterbased clay a breeze. Perfect for EM-210 or EM-217 clay. Made of 3" wooden toggle handles which are firmly attached to 18" of fine quality stainless steel wire. Also works well for oil based clay that is first softened with heat.



WCCT **1 Wire Cutter** **\$2.50**

Clay Brush Sets

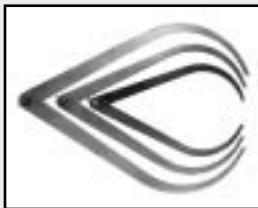
One of the most important tools in sculpture is the brush. Our nine piece oil clay, white bristle set (A) is great for quickly taking down those hard edges in oil clay. Our five piece soft, natural bristle set (B) is well suited for refining details in oil clay and for water based clay. Both sets include brushes ranging from 1" to fine.



OCBS9 **9 Piece Oil Clay Brush Set** **\$10.95**
WCBS5 **5 Piece Soft Bristle Brush Set** **\$13.95**

Aluminum Calipers

Another handy tool for sculpture is the Caliper. Allows you to take a quick measurement from one area of the sculpt and transfer it to another area. Helps greatly in creating a balanced form. Made of long lasting aluminum.



AL8 **8" Caliper** **\$5.49**
AL10 **10" Caliper** **\$6.25**
AL12 **12" Caliper** **\$7.25**

EM-210 (White Clay)

A popular water based clay that is used in making dividing walls for plaster and stone molds. EM-210 is very soft and easy to work with. It smooths easily with water and is perfect for making the dividing wall for two piece latex mask molds. EM-210 is made in California by Laguna Clay Company and widely used by L.A. based F/X shops.



EM21025 **EM 210 (25 lbs.)** **\$12.50**
EM21050 **EM 210 (50 lbs.)** **\$22.50**

Rubber Kidney Tools

Also called finishing rubbers. If you want to make great looking molds, these simple tools will help a lot. Makes the flow of plaster and stone much more manageable as it begins to set.



RKT2PS **Set of 2** **\$5.75**

Burlap

Used by mask-makers to reinforce plaster or gypsum molds. Reduces the possibility of mold cracks and prevents shattering.



TWB1 **Burlap 1 yard.** **\$ 2.50**

Chip Brushes

A nice, multi-purpose natural bristle brush suitable for all kinds of molding compounds. Affordable enough to use once and throw away or wash out and reuse.



CBRU112	1" Brushes (12)	\$5.95
CHBRU212	2" Brushes (12)	\$7.95
CBRU1B	1" Box (36)	\$14.95
CHBRU2B	2" Box (24)	\$14.95

EM-217 (Wed Clay)

Wed clay has become quite popular in the film industry for creating large, detailed sculptures. Although it is a water based clay, Wed clay dries very slowly and has many of the same sculpting qualities as oil clay. Requires a spray bottle of water to maintain moistness. Can be used for mask sculptures but is not considered reusable. Also favored by mold makers for retaining walls, due its firmness and slow drying characteristics.



EM21725	EM 217 (25 lbs.)	\$12.50
EM21750	EM 217 (50 lbs.)	\$23.50

Mold Makers Rubber Bands

A very durable yet inexpensive way of holding molds together. These are giant, heavy duty, rubber bands that will even withstand heat up to 250°F. Works especially well for foam latex molds.



RMBS4B	4" Mold Bands (Box of 50)	\$7.95
RMBS6B	6" Mold Bands (Box of 50)	\$8.95
RMBS9B	9" Mold Bands (Box of 50)	\$9.95

Mold Banding Straps

Tightly close any shape multi-piece mold with these straps. Made of strong, nylon webbing with a metal buckle type fastener on one end. A very necessary tool of the Monster Making trade. Can be baked with foam latex molds as well.



MBS4	4 ft. strap (green)	\$3.50
MBS6	6 ft. strap (orange)	\$3.95
MBS7	7 ft. strap (red)	\$4.25

Disposable Latex Gloves

Excellent for working with urethanes, silicones, plasters, latex, paints and many other substances that you want to keep off of your hands. Our gloves come in a large size only and are ambidextrous.



DLG100	Box of 100	\$9.95
DLG12B	Case (12 Boxes)	\$89.00

Fiberglass Cloth

A 10 ounce fiberglass cloth that is ideally suited for use with epoxy and fiberglass moldmaking. Much stronger than fiberglass mat and recommended for use with our new epoxy mold-making materials.



FGC10Y	10 Ounce Cloth (Per Yard)	\$ 8.50
---------------	----------------------------------	----------------



Epoxy Surface Coat ES-211

This is one of our favorite new products. Works much like the popular Epoxical 415 as a face coat for Ultra Cal 30 molds. Produces accurate, detailed, chip resistant duplications. Molds faced with ES-211 can last almost indefinitely through repeated baking, with absolutely no surface wear and no need for mold release when used with foam latex. Withstanding heat up to 350°F, ES-211 can also be used as a surface coat for very lightweight, larger molds. Has a work-life of 30-35 minutes and cures in the presence of water. Demold in 16 hours. White in color. Rated at 90-92 shore D Hardness.



ES211Q	Quart Kit	\$32.50
ES211G	Gallon Kit	\$114.95
ES2115G	5 Gallon Kit	\$425.50

Syntactic Dough EL-323-TC

This is a 2 component material which handles very much like clay. Great for making large, lightweight molds for foam latex or silicone skins. EL-323 is typically sandwiched between a surface coat and a laminating resin to complete the mold. Can be applied up to 4" thick. Easy 1:1 color coded mix to ensure proper blending. Cures to a machinable texture with a 60-65 shore D hardness. Has a work-life of 120-150 minutes. Great for anything ranging in size from a torso on up to a full sized T-Rex. Cleans up with water.



EL323Q	Quart Kit	\$16.95
EL3232G	2 Gallon Kit	\$139.95
EL3235G	5 Gallon Pail Kit	\$274.50

Ultra Cal 30

A low expansion, gypsum cement used widely in the SPFX industry. Makes hard, strong molds with dimensional accuracy. Ideal for foam latex and slush latex molds especially where durability and detail reproduction are a concern. Can be heated in an oven.



UC30-5	5 lbs.	\$4.95
UC30-25	25 lbs.	\$14.95
UC30-50	50 lbs.	\$29.95

Hydro Cal: White

Or, White Hydro Cal as it is known. This is a good choice for mask latex molds. It is harder than #1 Pottery Plaster and will hold detail longer with repeated castings. A good selection for decreasing production time on masks. Also works well for quick mother molds and is excellent for lifecasts.



HCW-5	5 lbs.	\$4.95
HCW-25	25 lbs.	\$14.95
HCW-50	50 lbs.	\$28.50

Epoxy Laminating Resin EL-302-C

This compound is used as the third and final layer for making a lightweight epoxy mold. Simply saturate some fiberglass cloth and lay it on top of the Syntactic Compound as the outer layer of the mold. Once the laminating resin is cured the mold is complete. Comes as a 2 component kit. Work time of 30 minutes. Cures white to 85 shore D harness.



EL302CQ	Quart Kit	\$37.50
EL302CG	Gallon Kit	\$104.95
EL302C5G	5 Gallon Kit	\$324.50

Elastigel™ Synthetic Flesh

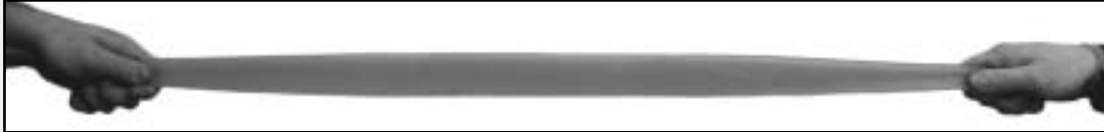
Elastigel™

One of the most lifelike, synthetic flesh compounds to come along in a great while. This is actually a water clear, hot melt, elastomeric polymer gel (say that 10 times fast). Elastigel also stretches up to 2800% with complete memory return and has a super high tear strength that is beyond anything we have seen in silicone. It can be melted and poured into any mold that will withstand 350°F without gassing. Compatible molds include high temp epoxies (see below), some silicones and metal. Since Elastigel is self releasing, no mold release is necessary when casting. Elastigel can be intrinsically colored using wax pigments or oil paint and can be painted by dissolving small amounts in solvent and mixing in any oil based tints for brushing or spraying. Because of its optical clarity, Elastigel can be used to simulate shards of broken glass or diamonds without presenting a hazard on set. This is way cool stuff!

ESRC1
ESRC2
ESRC10

Elastigel 1 lb. Block
Elastigel 2 lb. Block
Elastigel 10 lbs.

\$14.95
\$25.95
\$125



High Temp Epoxy System

With the introduction of our new **Elastigel!** Hot melt, a high temp mold system was required. So we've added three new epoxies to do the job. Each product has the ability to withstand the 350°F melting temperature. Used like our Room Temp Epoxies, we recommend the Surface Coat, backed with laminating resin and fiberglass cloth for small to medium sized molds. For larger molds and molds that require added strength we recommend using the Styling Compound sandwiched between the surface coat and laminating resin. As with all epoxy molds, use of fiberglass cloth is required for greatest strength. Included in the system is a low viscosity, aluminum filled, Surface Coat called SP-707. This specially modified epoxy is formulated for maximum detail reproduction and low sag.



<u>Surface Coat SP-707</u>		
SP707Q	Quart Kit	\$39.50
SP707G	Gallon Kit	\$135.25
SP7075G	5 Gallon Pail Kit	\$498.50

<u>Syntactic Dough EL-325-HTTC</u>		
EL325Q	Quart Kit	\$34.95
EL3252G	2 Gallon Kit	\$189.95
EL3255G	5 Gallon Pail Kit	\$365.50

<u>Laminating Resin EL-337</u>		
EL337Q	Quart Kit	\$39.50
EL337G	Gallon Kit	\$109.95
EL3375G	5 Gallon Pail Kit	\$475.50

<u>Fiberglass Cloth</u>		
FGC10Y	10 Ounce - per yard	\$8.50

Mask Latex



This is a single component, air drying, natural latex compound used widely by mask makers and SFX artists. Formulated specifically for masks, body parts and slush molded prosthetics. Can be brushed or poured into plaster or gypsum molds. Features a quick skin build-up, excellent detail reproduction and fast de-mold. Can be painted with adhesive based paints or Monster Makers Mask Paints. Comes as a naturally viscous material. Choose from our high solids firm grade, which yields a very durable, leathery rubber with good longevity. Or our popular, high solids, soft grade which yields a strong but stretchy rubber with a classic Halloween mask feel.

MMMLFQ	(Firm)	1 Qt.	\$14.50
MMMLFG	(Firm)	1 Gal.	\$39.50
MMMLF5G	(Firm)	5 Gal.	\$149.95
MMMLF50G	(Firm)	55 Gallon Drum	Call
MMMLSQ	(Soft)	1 Qt.	\$11.50
MMMLSG	(Soft)	1 Gal.	\$34.95
MMMLS5G	(Soft)	5 Gal.	\$134.95
MMMLS50G	(Soft)	55 Gallon Drum	Call

Molding Latex

A high solids, natural rubber compound that produces molds with exceptionally high tear strength and great flexibility. Makes inexpensive molds for plaster castings. Also compatible with other casting materials using the right mold release. Molding latex is also a single component system that air dries.

TMLQ	1 Quart	\$11.50
TMLG	1 Gallon	\$34.95
TML5G	5 Gallons	\$134.95

Dipping Latex

A low viscosity, natural latex compound that is ideal for making your own bald caps, inflatable membranes, bladders and Tom Savini's recipe for chunks of flesh. Can also be used for dipping plaster or metal shapes to form quick membranes. This is also the type of compound which is used to make latex gloves, condoms and balloons.

MMTDL1Q	1 Quart	\$11.95
MMTDL1G	1 Gallon	\$36.50
MMTDL5G	5 Gallon	\$144.95

Latex Filler

A Calcium Carbonate dispersion which, when added to casting latex, results in a stiffer latex article. By increasing the amount of filler, you can create a rigid latex casting with qualities of a rigid plastic article. Comes in liquid form. Add from 5 to 20%.

MMLFQ	1 Quart	\$9.95
MMLFG	1 Gallon	\$19.95

Latex Thickening Agent

Add this component to mask latex to create a thick mold making latex which will not run off a vertical surface. Allows you to make inexpensive molds for casting plaster, wax, acrylic or urethane with the right mold release. Also thickens runny latex to make it build-up better in the mold.

LTAQ	1 Quart	\$9.95
LTAG	1 Gallon	\$34.95

Latex Softening Agent

Here's a fun new aqueous emulsion that you can use to customize your latex compounds. You can soften up a firm grade of latex or make a soft grade of latex even softer by adding various amounts of this liquid emulsion. Helps give latex a more fleshy feel to the touch. Available nowhere else but here!

LSAEP	1 Pint	\$8.95
LSAEQ	1 Quart	\$14.95
LSAEG	1 Gallon	\$39.95

Monster Makers Mask Paint

A super concentrated, pre-mixed paint medium developed for use on latex masks, props and body parts. Features excellent coverage, super flexibility, dries quickly and adheres well to the mask surface. Colors can be intermixed to create an endless variety of shade possibilities. Recommended for use with external mix air-brushes such as the Paasche H, the Badger 350. Can also be applied with a brush or stippled on with a sponge. Choose from the 9 Color Kit: Red, Yellow, Blue, Black, White, Brown, Lt, Med. and Dk Flesh or the 13 Color Kit: Red, Yellow, Blue, White, Black, Orange, Green, Violet, Brown, Gray, Lt, Med. and Dk. Flesh.



MPK49	4 oz. 9 Color Kit	\$54.95
MPK413	4 oz. 13 Color Kit	\$77.95
MPK89	8 oz. 9 Color Kit	\$99.95
MPK813	8 oz. 13 Color Kit	\$142.95
MPI4C	4 oz. (ind. color)	\$6.95
MPI8C	8 oz. (ind. color)	\$11.95
MPQ1	32 oz. (ind. color)	\$39.95
MPG1	1 Gal. (ind. color)	\$98.50
MP5G1	5 Gals. (ind. color)	\$298.50

Latex Colorants

A highly concentrated latex pigment for intrinsically coloring latex polymers such as mask latex. Just a few drops of this pigment will add color to a 5 gallon bucket. Very useful when your character has a predominant color. Allows paint to cover the mask better. Cuts down on paint and paint time. Produces very intense color if needed. Available in Red, Yellow, Blue, Black, White and Flesh.



LIC10I	1 oz. (Ind)	\$3.95
LIC20I	2 oz. (Ind)	\$5.95
LIC40I	4 oz. (Ind)	\$9.95
LIC80I	8 oz. (Ind)	\$17.95
LIC10K	1 oz. Kit (6 Colors)	\$24.50
LIC20K	2 oz. Kit (6 Colors)	\$32.50
LIC40K	4 oz. Kit (6 Colors)	\$55.95
LIC80K	8 oz. Kit (6 Colors)	\$99.95

Perma-Wet

Our heavy bodied premium clear gloss coating. Forms a tenacious, highly flexible bond while sealing and waterproofing the mask. Has a 600% elongation. Used primarily to simulate realistic wet areas on props and masks. Perma-Wet can also be tinted using any water based pigments. Works on hard to paint urethane elastomers. Best when sprayed.



PWGC4	4 oz. Perma-Wet	\$9.95
PWGC8	8 oz. Perma-Wet	\$19.95
PWGC32	32 oz. Perma-Wet	\$39.95

High Gloss

A medium viscosity water based elastomer that imparts a high gloss shine to latex and urethane castings. Has good adhesion with high elasticity. This is a premium non-yellowing formula that can be sprayed or brushed. Great for masks, props and simulated wet areas. Water reducible. Can also be tinted with water based pigments and dyes.



HGC4	4 oz. High Gloss	\$9.95
HGC8	8 oz. High Gloss	\$19.95
HGC32	32 oz. High Gloss	\$39.95
HGCC	1 Gallon High Gloss	\$129.95

Latex Paint Base

A thin, liquid latex that can be used to make your own mask paints or extend our pre-made paints. Use this in combination with our concentrated latex pigments to create a flexible, permanent paint medium for latex masks, props and body parts. Dries clear without pigment. Can also be used as a final top coat for masks to add vibrancy to the underlying colors.

LPB8	8 oz. Paint Base	\$9.95
LPBQ	1 Qt. Paint Base	\$17.50
LPBG	1 Gal. Paint Base	\$45.00

MONSTER MAKERS™ FOAM THEATRICAL LATEX FOAM

Monster Makers Foam - 1 Quart Kit

1 Quart High Flow-Latex Foam Base
8 oz Foaming Agent
4 oz. Curing Agent
4 oz. Gelling Agent
2 oz. Mold Release

Contains enough material to make 6 full face appliances or numerous smaller foam pieces.



MFLSQP	1 Quart Prosthetic Grade Kit	\$30
MFLSQA	1 Quart Animatronic Grade Kit	\$30

Monster Makers Foam - 1 Gallon Kit

1 Gallon High Flow-Latex Foam Base
1 Quart Foaming Agent
1 lb. Curing Agent
1 lb. Gelling Agent
4 oz. Mold Release

Contains enough material to make 24 full face appliances or 6-8 average sized full head mask castings.



MFLSGP	1 Gallon Prosthetic Grade Kit	\$75
MFLSGA	1 Gallon Animatronic Grade Kit	\$75

Monster Makers Foam - 5 Gallon Kit

35 Lbs. High Flow-Foam Base
5 Quarts Foaming Agent
2 Quarts Curing Agent
2 Quarts Gelling Agent
1 Lb. Mold Release

Contains enough material to make 105 full face appliances or 25-30 average sized full head masks.



MFLS5GP	5 Gal. Prosthetic Grade Kit	\$300
MFLS5GA	5 Gal. Animatronic Grade Kit	\$300

You've seen it in **Planet of the Apes**, **Men in Black 2** and dozens of other feature films and TV's shows. Top foam runners agree that there is no finer product of its kind available today. Used throughout the world by top industry professionals, **Monster Makers Foam** (formerly known as McLaughlin Foam) is unmatched for its quality, dependability and stability. It's unique **Microcellular Chemistry** yields a velvety soft foam with extremely fine cells. This makes for beautiful prosthetic blending edges and precision detail reproduction. **Monster Makers Foam** is suitable for a wide variety of applications ranging from stop motion puppets, prosthetic makeup-appliances, creature suits to large animatronic characters for film and television. Each kit comes complete with detailed instructions and all the necessary components for making foam. Choose from **Animatronic or Prosthetic Grade Kits** depending on your application. Can be baked in molds made from aluminum, stone, fiberglass, epoxies and silicone. Latex Foam is a very economical choice for all sorts of creature and make-up effects and is still considered the backbone of the make-up F/X industry.



Theatrical Latex Foam Components

High Flow™ Foam Base

The High Flow Foam base is now our standard base with all kits. A proprietary mixture of high solids natural latex, High Flow is formulated for added stability and a lower viscosity. High Flow gives a fast rise with increased inherent flowability at high volumes without the need for additives. Find out why more and more foam runners depend on the quality of High Flow to get the job done. High Flow also has a very long shelf life and will not progressively thicken over time.



MMHFBQ	High Flow - Quart	\$14
MMHFBG	High Flow - Gallon	\$40
MMHFB5G	High Flow - 5 Gallon	\$160

Foam Latex Injection Gun

Here is an affordable, logically constructed foam gun that gets the job done without being overdone itself. Our foam gun is sturdy, dependable and simply constructed to keep the price down. This is a back loading gun, which is easy to clean and made with a lucite barrel for strength. The front of the gun is designed with an easy to remove cap assembly for cleaning. Features self sealing air bleed holes for total air evacuation and a self guiding plunger for smooth operation. The self guiding feature eliminates the need for an awkward end cap which can be a nuisance. Holds a full, large sunbeam bowls worth of foam (about 3 quarts). **Please Note: This is a made to order item.**



FLIG1	Latex Foam Gun	\$235
--------------	-----------------------	--------------

Microcellular Foaming Agents

Animatronic Vs Prosthetic Grade

To give our customers the greatest versatility, we offer the choice of two foaming agents. Both yield very soft foam with fine cells. The difference being that the Animatronic Grade has some added stabilizers that are helpful for larger foam runs such as suits or animatronic characters. This insures that the foam will gel more predictably when excess ammonia is left in the foam either by accident or design. Either foaming agents will give excellent results with less stress for the foam runner.



MMFAQA	Animatronic Grade - Quart	\$25
MMFAGA	Animatronic Grade - Gallon	\$75
MMFAQP	Prosthetic Grade - Quart	\$25
MMFAGP	Prosthetic Grade - Gallon	\$75

Standard Gelling Agent

Our Standard gelling Agent is formulated to disperse evenly into the foam to reduce the possibility of gel shock. We've also incorporated an anti-settling agent for a longer shelf life. As with all of our foam components, our standard gelling agent can be ordered individually. Gelling agent can also be used to gel mask latex to accelerate the casting process.



MMGAP	16 oz. Gelling Agent	\$12
MMGAQ	32 oz. Gelling Agent	\$25
MMGAG	Gallon Gelling Agent	\$70

Standard Curing Agent

Our Standard Curing Agent combines synergistically with our Microcellular Foaming Agents in the curing process, to create a fast and efficient low modulus (soft cure.) This result is a velvety soft quality to our foam that folks have come to know and love.

MFCAP	16 oz. Standard Cure	\$14
MFCAQ	32 oz. Standard Cure	\$25
MFCAG	Gallon Standard Cure	\$90

Stearate Mold Release

Our low dusting latex foam mold release formulated to grab the mold instead of dusting off into the air. Can also be used as a great plaster to plaster separator.



MMFMR4	4 oz. Mold Release	\$3.95
MMFMR16	1 lb. Mold Release	\$9.00
MMFMRG	10 lb.. Mold Release	\$60
MMFMR5G	40 lbs. Mold Release	\$225

6 Color Foam Pigment Palette

These pigments are useful for imparting an overall color to your latex foam. Add a few drops into the bowl during the foam run to achieve the desired color. These colors are very potent so it doesn't take much. Choose from red, yellow, blue, black, white and #1 Flesh Tone. (Please note that all quantities of white will be doubled for the same price due to its lower cost.)



LIC10I	1 oz. (Ind)	\$3.95
LIC20I	2 oz. (Ind)	\$5.95
LIC40I	4 oz. (Ind)	\$9.95
LIC320I	32 oz. (Ind)	\$69.95
LICGOI	Gallon (Ind)	\$225
LIC10K	1 oz. Kit (6 Colors)	\$24.50
LIC40K	4 oz. Kit (6 Colors)	\$55.95

High Rise Additive Concentrate

Our High Rise Foaming Agent has the greatest foaming action of foaming agents compatible with natural latex foam. Easily produces super high volume latex foam. Can also be used in hot summer weather. If you've cut way back on the gelling agent and your foam is still going off too fast. If you absolutely have to run foam in hot environments, this will give you more work time.



MMHRAP	16 oz. High Rise	\$16
MMHRAQ	32 oz. High Rise	\$30
MMHRAG	Gallon High Rise	\$100

Super Cell Foaming Agent™

Super-Cell™ makes thick, fluffy microcellular™ latex foam ideal for patching and seaming. Whipped foam rises rapidly to high volumes, has ultra-fine cells and holds its froth all day. Lovingly nicknamed "HOBART HELPER" by Hollywood foam technicians, replacing 10% of your usual foaming agent with Super-Cel™ helps make finer-celled foam in large mixers. Super-Cell can also be used as a sole foaming agent when productions demand a super fine-celled latex foam with more resiliency, with the same subtle movement you've come to expect of Monster Makers Foam.



MSS16	16 oz. Super Cell	\$25
MSS32	32 oz. Super Cell	\$40
MSS128	Gallon Super Cell	\$125

Patch Cure Additive™

Our exclusive new foam patch curing additive. Some foam patchers add an extra gram or two of Standard Cure to patching foam to speed up the cure process. This works but tends to make firmer foam. Others add some Setsit 104, a cure accelerator, to the usual amount of Standard Cure to speed things up. But it smells pretty bad and can burn your skin on contact. Our Foam Patch Cure additive has a special blend of accelerators that allow the foam to cure more efficiently at lower heat levels. Simply add 2 grams of PCA to 28 grams of our standard cure. Then add at the mixture at the stand level to your patching foam. Gives an added kick to the cure that is especially useful when foam is cured in less than ideal conditions or at lower than recommended temperatures. And your foam won't smell any worse than usual! Use Patch-Cure Additive in combination with Super-Cell for the ultimate professional patching solution.



MMPCA8	8 oz. Patch Cure Additive	\$14.95
MMPCAP	16 oz. Patch Cure Additive	\$24.95

Flow Enhancer™

High volumes foams can be difficult to transfer into molds. Our Flow Enhancer is a special blend of surfactants that eliminates this problem by dramatically increasing flowability of the foam without effecting its other properties or increasing shrinkage.



MMFEP	16 oz. Flow Enhancer	\$14.95
MMFEQ	32 oz. Flow Enhancer	\$24.95
MMFEG	1 Gallon Flow Enhancer	\$69.95

Zinc Oxide Dispersion

When added to the standard foam run, this special additive will impart a tighter cure, resulting in a more durable latex foam casting. Great for costuming and the soles of feet when greater wearing properties are required.

MMZOD4	4 oz. Zinc Oxide Dispersion	\$6.95
MMZOD16	16 oz. Zinc Oxide Dispersion	\$19.95

INTRODUCTORY FOAM LATEX APPLIANCE KIT



Includes the following items: 1 Bald Cap, 1 Ink Pencil, 2.5 lbs. Moldgel Alginate, 3 rolls plaster bandages, 25 lbs. Ultra Cal 30, 6 ft. Mold Strap, 5 lbs. Monster Makers Oil Based Clay, Intermediate Sculpting Tool Set, Texture Stamp Kit #1, 25 lbs. EM-210, 2" Chip Brush, 1 yard Burlap, Metal mold handle, Clay Extruder, 1 Quart Kit Monster Makers Foam Latex, Makeup Application Kit, 15 color RMPG set, 1 tube Duo Adhesive, 2 oz. Pro Adhesive, 8 oz. Adhesive remover and Basic Foam Rubber Instructional Video Tape. (Foam appliance and stand shown not included.)

If you've ever had the desire to create theatrical quality foam latex appliances designed to fit your own face, than this kit will get you started in art of character transformation. This



introductory set provides everything needed to create up to 5 copies of one, full face foam appliance design or up to a dozen different small appliance pieces such as noses, foreheads, scars, chins etc. Though this is labeled as an introductory kit, don't be fooled by the name. It is quite a serious set of materials. These are the very same items used by professional make-up artists to create character make-ups for feature film, television and theatre. Still the most widely used technique for transforming actors into fantastic characters, a foam latex appliance becomes a second skin which translates every subtle movement of your face beneath to the character above.

IFLK1 **Introductory Foam Kit** **\$265**

INTERMEDIATE FOAM LATEX APPLIANCE KIT



Includes the following items: 2 Bald Caps, 1 Ink Pencil, 2.5 lbs. Moldgel Alginate, 6 rolls plaster bandages, 100 lbs. Ultra Cal 30, (2) 6 ft. Mold Straps, 10 lbs. Monster Makers Oil Based Clay, Professional Sculpting Tool Set, Texture Stamp Kit #1 and #2, 50 lbs. EM-210, (2) 2" Chip Brushes, 2 yards Burlap, 4 Metal mold handles, 1 Clay Extruder, 1 Gallon Kit Monster Maker Foam Latex, 1 Makeup Application Kit, 15 Color Rubber Mask Grease Paint Set, 1 Tube Duo Adhesive, 4 oz. Pro-Adhesive, 16 oz. Isopropyl Myristate and Basic Foam Rubber Instructional Video Tape. (Foam appliance and Base shown not included.)

The Intermediate Foam Latex Appliance Kit is designed for those that have multiple foam latex appliance projects to create and are ready to get them quickly underway. We've preselected everything needed to create as many as four full face appliance designs or up to fifteen or more partial face appliance designs. As many as twenty-one full face appliances castings or several dozen partial appliances can be cast with this kit. Multiple



on simultaneously, which is especially helpful when a deadline is looming. If you've got a lot of foam work to do this is the kit to get.

IFLAK2 **Intermediate Foam Kit** **\$395**

BEGINNERS MASK-MAKING KIT



Here's a kit to get you started in the Art of Mask-Making. Everything you need to make a simple, half head, slush cast halloween mask creation of your design is included. A great way to get your feet wet in Mask-Making without breaking the bank.

The Beginners Mask-Making Kit contains:

- | | |
|---------------------------|------------------------------|
| 1 Half Head Armature | 1 Quart Mask Latex |
| 5 lbs. Oil Based Clay | 5 Color 4 oz. Mask Paint Kit |
| 4 Piece Modeling Tool Set | 1 Sponge Paint Applicator |
| 25 lbs. White Hydro Cal | (Not Pictured) |
| 1 yard Burlap | Mask-Makers Handbook |
| (1) 1" Chip Brush | |
| 1 Rubber Kidney Tool | |

BEMMK **Beginners Mask Making Kit** **\$115**

BASIC MASK-MAKING KIT



This kit is designed to get you started making a basic full head Latex Halloween Mask. Everything is included for sculpting, molding, casting and hand painting a basic mask design. Offers a more challenging process than the Beginners Kit. Enough Material is provided to make two copies of single full head mask creation. **The Basic Mask-Making Kit Contains:**

- | | |
|---------------------------------|--------------------------------|
| 1 Deluxe Full Head Armature | 1 Mold Banding Strap |
| 10 lbs. Oil Based Clay | 2 Quarts Mask Latex |
| Basic Studio Sculpting Tool Set | 5 Color 4 oz. Mask Paint Kit |
| 4 Piece Oil Clay Brush Set | 4 oz. Perma-Wet Gloss Coating |
| 25 lbs. EM 210 | 1 Sponge, Paint Applicator |
| 25 Lbs. Ultra Cal 30 | (1) 5 ft. Lengths of Mask Hair |
| 1 Yards Burlap | 1 Clay Scraper |
| (1) 2" Chip Brushes | 1 Half Round Acrylic Eye Set |
| Rubber Kidney Tool | Mask Makers Handbook |

BMMK2 **Basic Mask-Making Kit** **\$195**

DELUXE MASK-MAKING KIT



This is our best selling Mask-Making Kit. Comes complete with everything you need to make a professional Latex Mask. Gives you enough material to create up to four copies of one medium to large sized mask creation. Includes more material than the entry level kits and an airbrush set for professional paint application. **The Deluxe Mask-Making Kit Contains:**

- | | |
|------------------------------|--------------------------------|
| 1 Deluxe Full Head Armature | 1 Steel Scraper |
| 1 Mini Full head Armature | 2 Mold Banding Straps |
| 20 lbs. Oil Based Clay | 1 Gallon Mask Latex |
| Intermediate Studio Tool Set | 13 Color 4 oz. Mask Paint Kit |
| 4 Piece Oil Clay Brush Set | 4 oz. Perma-Wet Gloss Coating |
| 50 lbs. EM 210 | 1 Paasche H Airbrush Set |
| 50 Lbs. Ultra Cal 30 | (2) 5 ft. Lengths of Mask Hair |
| 2 Yards Burlap | 2 Half Round Acrylic Eye Sets |
| (1) 2" Chip Brush | Mask Makers Handbook |
| Rubber Kidney Tool Set | |

DMMK2 **Deluxe Mask Making Kit** **\$375**

SUPER-DELUXE MASK-MAKING KIT



The Super Deluxe Kit, our second largest, will most definitely help get you on the road to becoming a professional rubber monster maker. Packed with lots of mask-making goodies and enough material to make at least 25 large, or 50 small, full head mask copies. Designed for the serious mask-maker who wants to begin making masks for profit. Allows you to work on two designs at once. A serious kit for a serious entrepreneurs.

Super Deluxe Mask-Making Kit Contains:

- 1 Deluxe Full Head Armature
- 1 Half Head Armature
- 2 Mini Full Head Armatures
- 30 lbs. Monster Makers Oil Based Clay
- Intermediate Sculpting Tool Set
- 10 Piece Oil Clay Brush Set
- Texture Pad Set #1, #2 (24 pieces)
- 50 lbs. EM 210
- 100 Lbs. Ultra Cal 30
- 3 Yards Burlap
- (12) 2" Chip Brushes
- Rubber Kidney Tool Set
- 3 Mold Banding Straps
- 5 Gallons Mask Latex
- 13 Color 8 oz. Mask Paint Kit
- 4 oz. Perma- Wet Gloss Coating
- Paasche H Airbrush Set
- (3) 5 ft. Lengths of Mask Hair
- 3 Half Round Acrylic Eye Sets
- Mask Makers Handbook

SDMMK2 Super Deluxe Mask Kit \$725

MEGA-DELUXE MASK-MAKING KIT



Yes, this is the grand daddy of all Mask-Making Kits. Geared towards those that are ready to jump in and start their own business. Allows you to work on up four projects at one time. Capable of producing up to 75 medium sized, full head mask copies or up to 150 small, full head mask copies.

- 2 Deluxe Full Head Armatures
- 2 Half Head Armatures
- 3 Mini Full Head Armatures
- 40 lbs. Monster Makers Oil Based Clay
- Professional Sculpting Tool Set
- 10 Piece Oil Clay Brush Set
- Texture Pad Set #1, #2 (24 pieces)
- 100 Lbs. EM-210
- 200 Lbs. Ultra Cal 30
- 4 Yards Burlap
- (24) 2" Chip Brushes
- Rubber Kidney Tool Set
- 6 Mold Banding Straps
- 10 Gallons Mask Latex
- 13 Color 16 oz. Mask Paint Kit
- 8 oz. Perma- Wet Gloss Coating
- Paasche H Airbrush Set
- (4) 5 ft. Lengths of Mask Hair (Not Shown)
- 6 Half Round Acrylic Eye Sets (Choose Colors)
- Mask Makers Handbook

MDMMK2 Mega Deluxe Kit \$1,125

STARTER, FACE LIFECASTING KIT

Here's a great kit that includes everything you need to capture an exact **half head** impression. We've assembled all the essential lifecasting materials that you'll need for making two impressions in Hydrocal. Use the casting as a base for sculpting prosthetic makeup pieces or just to immortalize yourself for eternity! **Please note:** The bald cap may be reused if removed carefully. (Lifecast shown, not included.)



Kit Includes: 1 Bald Cap, 1 oz. Adhesive, 2 oz. Adhesive Remover, 1 lb. Prosthetic Alginate, 4 Rolls Plaster Bandages, 2 pairs disposable gloves, 10 lbs. Hydro Cal, 1 gallon mixing bucket, 2 brush applicators, (2) 1" chip brushes, Lifecasting Essentials Video (optional).

SFLCK	Face Casting Kit (no Video)	\$49.95
SFLCKV	Face Casting Kit with video	\$65.95

PRO, FULL HEAD LIFECASTING KIT

We've assembled all of the essential lifecasting materials in this kit that you'll need for making two, full head reproductions in white hydrocal. If you've ever wanted to try your hand at doing a full head, than this is the kit to get the job done. Makes a great base for sculpting foam latex prosthetic Make-up appliances or a deluxe full head Halloween mask. (Full head bust shown, not included and is not representational of the bust size to be made with the materials provided.)



Kit Includes: 2 Bald Caps, 1 oz. Adhesive, 2 oz. Adhesive Remover, 2.5 lbs. Prosthetic Alginate, 6 Rolls Plaster Bandages, 4 pairs disposable gloves, 25 lbs. Hydro Cal, (2) 1 gallon mixing bucket, (2) 1" chip bushes, 2 brush applicators and Lifecast Video.

PFHLK	Pro Full Head Kit (no Video)	\$99.50
PFHLKV	Pro Full Head Kit with video	\$114.95

LIFECASTING ESSENTIALS

Our new tape on the art of life casting shows you how the professionals work their magic to capture three dimensional life impressions. All the essential techniques are documented in this easy to follow how-to tape. You'll learn how to do a flawless full head impression, a full head and upper torso, a half head, hands and arms. Additionally, you'll discover how to tackle the difficulty of capturing good impressions of ears and learn how the pro's cast inexpensive positives in fiberglass directly from alginate molds. All without any surface preparation! It can easily be done and Lifecasting Essentials will show you how. All this and more in one video presentation. Approximate run time: 55 minutes. Call to reserve your copy today. **This tape is scheduled for release in fall 2002.**



MMLCEV	Life Casting Essentials	\$19.95
---------------	--------------------------------	----------------

BULK, FULL HEAD LIFECASTING KIT

For those of you that have a group lifecasting project, this kit was put together specifically for you. Included is everything required for six full head, or ten half head lifecasts or a combination of both. Great for small groups that are gearing up to do advanced make-up projects for which a lifecast is a necessity. Choose with or without our instructional video. **Please Note: If handled carefully, baldcaps can be reused to created up to ten lifecasts with the material provided.** (Full head bust shown not included and is not representational of the bust size to be made with the materials provided.)



Kit Includes: 6 Bald Caps, 1 oz. Adhesive, 2 oz. Adhesive Remover, 10 lbs. Prosthetic Alginate, 24 Rolls Plaster Bandages, 12 pairs disposable gloves, 100 lbs. Hydro Cal, (2) 1" chip brushes, 2 applicator brushes, (3) 1 gallon mixing buckets and Lifecasting Essentials Video (optional).

BFHLK	Bulk Full Head Kit (no video)	\$285
BFHLKV	Bulk Full Head Kit with video	\$299

Woochie Bald Cap

This is a good quality cap that fits small to medium head sizes. Has a long nape and thin edges. Works great for most lifecasting jobs.

**MMWSBC****Bald Cap****\$10.95****Ink Pencil**

Use this pencil to mark the hairline on a baldcap. The line then transfers onto the alginate and in turn onto the stone positive. Before marking, the tip must be wet with water to activate the ink.

**MMIP1**
MMIPD**Ink Pencil**
Ink Pencil (dozen)**\$1.95****\$19.95****Dental Grade Alginate**

A fast setting dental impression cream for making teeth models. Picks up fine detail. Can be used for small area lifecasting jobs as well. White in color. Cast models in stone, plaster, acrylic and wax without mold release.

**MMDGALB****Dental Grade 1 Lb.****\$9.95****Do It Yourself
Alginate Bonding Agent.**

As many of you know, alginate that has already set-up will not allow fresh alginate to adhere. This is due primarily to the PH of the set material which is lower than the fresh material to be added. A solution of baking soda and water (3 Tbsp's per pint of water) sprayed or brushed on the set alginate, raises the PH on the set surface enough for the fresh alginate to adhere. You may also use Arm & Hammer Washing Soda which is more alkaline than Baking Soda at PH 11.0

**MoldGel™ Prosthetic Grade
Alginate**

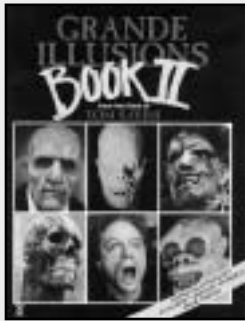
If you want to do a lifecast, than this is the stuff to use bar none! We've used a lot of alginates, but nothing comes close to the quality of this product. Moldgel mixes to a creamy consistency by hand and slowly gets thicker as you work. You never have to wonder how much time you have left. Works with warm water and gives you 7-8 minutes working time. Great for head casts and body casting. We love this stuff!

**MGPGA1****MoldGel 1 lb.****\$13.50****MGPGA2****MoldGel 2.5 lbs.****\$29.95****MGPGA10****MoldGel 10 lbs.****\$105.50****MGPGA25****MoldGel 25 lbs.****\$234.95****Gypsona
Plaster
Bandages**

Very smooth and creamy bandages that are preferred by many people over other brands. Used in lifecasting to create a rigid jacket over the rubbery alginate to maintain an accurate shape. We carry the **Extra-Fast Set** Grade.

Fast Set and additional sizes also available by special order.

GPB4R**4" Roll (5 yards)****\$3.95****GPB4B****4" Box (12 Rolls)****\$39.95****GPB4C****4" Case (6 Boxes)****\$224.95****GPB6R****6" Roll (5 yards)****\$4.95****GPB6B****6" Box (12 Rolls)****\$49.95****GPB6C****6" Case (4 Boxes)****\$199.95**

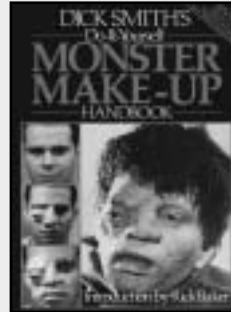


Grand illusions Book 2

The sequel to Tom Savini's very popular Bizzaro book. Detailed coverage of the F/X sequences of Tom's films from 1983 to midway throughout the '90's. A nice successor to the original with loads of photographs.

TSGB2

\$19.95



Dick Smith's Monster Makeup Handbook

The publication that inspired many of today's most successful make-up artists. Written by academy award winning make-up artist, Dick Smith. Illustrates many basic make-up techniques. A great book for amateurs and professionals. Softbound, 108 pages. B/W and color photos.

DSMMH

\$12.95



Molding and Casting Handbook

Explains how to use everything from neoprene latex to silicone. This is an invaluable text for anyone looking to increase their knowledge of materials. Includes a section with plans for building your own custom, vacuumform machine. Softbound. 236 pages.

PBMCH

\$19.95



The Monster Makers Mask Makers Handbook

Learn the art of making latex masks from a professional mask-maker. Follow each stage of the process through step by step photo-illustrations and a highly informative text. Over 150 b/w photos with a special color insert. Softbound 50 pgs. By Arnold Goldman .

4MH

\$14.95



Behind the Mask

A gorgeous book on Special Makeup Effects. This one's a British Import with tons of cool, never before seen photos. Cover's all the heavyweights. Possibly the best book written on this fascinating subject. In depth and very informative. Softbound, 130 pages, By Salisbury and Hedgecock. Color and B/W photos.

BTM11

\$23.95



Corson's Stage Makeup

Rich Corson's bible of makeup. This is the one to have if you are serious about becoming a makeup artist. Covers all the basic techniques as well as many newer methods for all types of stage make-up. New, 2001 9th Edition. Hardbound, 432 pages, B/W and Color Photos.

RCSMSB

\$ 94.95



Modeling The Head In Clay

Here's a must have for anyone interested in learning how to do realistic portraits. Master sculptor Bruno Luchesi walks you through the process of creating a portrait from the beginning. Uses detailed photographic illustrations to show the process, step by step. Softbound.

BLMHC1

\$17.95



Modeling A Likeness In Clay

Another great resource for capturing a likeness in clay. Covers each area of the face as a separate form and shows how to ingrate them as a whole. Also, demonstrates the proper proportions and measurements of the head and face using calipers. Hardcover edition.

DGMLC1

\$23.50



The Portrait In Clay

Watch as master sculptor Peter Rubino uses thoughts and feelings combined with technique to produce evocative portraits in clay. Uses line drawings, illustrations, and running commentary to show how to sculpt a portrait likeness. Very well done. 20 color and 250 b/w illustrations. Softbound, 160 pages.

PBMCH

\$22.50



Modeling and Sculpting The Human Figure

A figure sculpting book that has been a standard reference for almost two generations. Lanteri demystifies many techniques for recreating anatomical form. Covers a four year course in fine sculpture! A valuable reference tool as well. Softbound, 159 pages

ELMHF1

\$13.95



Modeling The Figure In Clay

Master sculptor, Bruno Luchesi demonstrates how to sculpt the complete anatomy from the inside out! Wonderful photographs follow the process as the figure is sculpted from skeleton to flesh and everything in between. Amazing to watch. Softbound edition.

BLMFC1

\$17.95



Modeling and Sculpting Animals

Written by the teacher of sculptor Rodin! A very detailed if dated book on animal sculpture with special emphasis on the horse. Covers the process called pointing used to scaling up any model to full size. Contain lots of useful info. Softbound, 233 pages.

ELMSA2

\$13.95



Basic Foam Rubber Appliance

This tape covers the fundamentals of doing your own foam latex appliances. Demonstrates an excellent full face, latex foam zombie make-up from start to finish. All supplies are listed. (See page 18 for complete Foam Appliance kits.)

MBBFRA2 Basic Foam \$26.95



Cable Controlled Mechanical Mask

If you want to learn how to make a great looking cable controlled Foam Latex Mask, than this is the tape to learn from. Definitely the most popular in the series. Covers sculpting, mold-making, cable design, underskull fabrication and much more!

MBCMM3 Cable Video \$29.95



Dick Smith's Monster Make-up Video

Based on the very popular handbook by Dick Smith. Demonstrates several basic, but effective make-up techniques. A good tape for beginners and professionals alike. Very Entertaining. Runs approx. 30 minutes.

MMDSV Dick Smith Video \$14.95



Fantastic Dentistry Volume 1

For the first time, the techniques of Dental Appliance Making are revealed in an easy to follow format. If you've ever wanted to create a professional set of custom fitting, theatrical Dentures or simply wondered how they were made, than you'll want to see this very informative video. Running time: 40 minutes.

MMFDV1 Volume 1 \$19.95



Fantastic Dentistry Volume 2

Fantastic Dentistry Volume 2 shows you how to create professional fangs. Takes you step by step through the entire process from sculpting the pattern to the finished appliance. Reveals a great molding technique for reproducing dozens of perfect copies of any style. **Scheduled for release in winter 2002.**

MMFDV2 Volume 2 \$19.95



Lifecasting Essentials

Learn how to do a professional full head lifecast, a full head and upper torso, a half head, hands and arms. All this and lots more in one video presentation. Approximate run time: 55 minutes. This tape is **scheduled for release in fall 2002.** Call to reserve a copy.

MMLCEV Lifecasting Video \$19.95



Professional Mask Making Volume One

Details the entire process of manufacturing professional latex halloween masks. Methodically covers each stage for creating a custom half mask design that surpasses anything seen in costume shops. **Scheduled for release in Spring 2003.**

MMPMV1 Mask-Making Vol. 1 \$19.95



Professional Mask Making Volume Two

The mask-making video you've been waiting for! Learn from the pro's how to make a super detailed halloween mask from design to reality. No stone is left unturned. Shows how to make seamless production molds for those interested in starting their own mask business. **Scheduled for release in Summer 2003.**

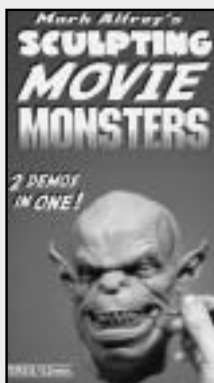
MMPMV2 Mask-Making Vol. 2 \$19.95



Props and Body Parts

Learn the secrets of creating latex props and body parts from lifecasts or original clay sculptures. Demonstrates how to turn a lifecast into a realistic rubber replica that will fool most people. Covers complete molding casting and painting techniques from start to finish. **Scheduled for release in Winter 2003.**

MMPBPV Props and Body Parts \$19.95



Sculpting Movie Monsters

One of the first steps in creating a fantasy character for the movies is to sculpt it. Hollywood creature creator Mark Alfrey demonstrates this process with two original sculptures created before your very eyes. Mark's credits include Men Black, Buffy the Vampire Slayer, Planet of the Apes and many others. 52 minutes, Stereo.

MASMM1 Mark Alfrey \$24.95



Movie F/X DVD

The first DVD video magazine to cover the F/X industry. This is an f/x enthusiasts dream come true. Professionally produced and packed with lots of great behind the scenes footage. Choose from Volume #1, #2, #3, #4 or #5. Call or check website for current issue.

MFDVD Movie F/X \$9.95



Molding and Casting with Silicone

This is the tape to have if you are interested in working with silicone. Demonstrates the case mold technique for sculpture reproduction and shows the complete technique for creating a realistic, translucent silicone head, including the core mold process. **Scheduled for release in Fall 2003.**

MMMCWS Silicone Video \$19.95

Por-A-Cast

An amazing 2 part casting compound that goes from liquid to a hard, light weight plastic in 2 minutes! Great for resin kits but can be used for all kinds of applications. Por-A-Kast pours like water so it will pick up even the finest details. Can be mixed by eye at a 1:1 ratio and combined with all kinds of fillers such as bronze powder to simulate bronze sculpture. Best when used in silicone molds. Creates a white casting, but can be easily pigmented.



PAK2QK	2 Quart Kit	\$25.95
PAK1GK	1 Gallon Kit	\$39.95
PAK2GK	2 Gallon Kit	\$75.95
PAK5GK	5 Gallon Kit	\$179.95

Watertrap

A natural, potassium silicate powder that acts to sequester and block the effect of water. In urethane compounds, Watertrap prevents the foaming reaction with H₂O and eliminates the moisture sensitivity problem with urethanes. Allows you to make rigid molds right up against water based clays and pour urethane directly into alginate molds. A very valuable product. Especially when the clock is ticking.

WTFA8	Watertrap 8 oz.	\$9.95
WTFA1LB	Watertrap 1 - 9 Lbs.	\$19.95 per.
WTFLBM	Watertrap 10 Lbs. or more	\$17.95 per

Alumina Trihydrate

This white powder additive can be mixed into any fast cast urethane compound to slow the set, add weight or extend product to bring the part cost down. A 20% to 30% addition can give an extra two minutes of work time. By adding a few percent by weight, Alumina Trihydrate can also add body to reduce surface bubbles and cut down on part defects.

ALTRQ	1 Quart	\$9.95
ALTRG	1 Gallon	\$19.95
ALTR5G	5 Gallon	\$59.95

Flexible, Self Skinning Foam

This is our newest low density, soft polyfoam that has excellent self skinning qualities and picks up great detail. Comes the closest to having a rubbery feel of any self skinning systems we've seen. Has a 2 to 1 mix ratio and an expansion ratio of 30 times the original volume. Works best in a silicone mold that can be capped off before it expands (known as packing.) By lowering the A side of this foam by 5% - 10% the foam can be made even softer. Works well for props and forms where using a latex skin is not desired or practical.

FSSFQ5	1.5 Quart Kit	\$29.95
FSSF15	1.5 Gallon Kit	\$75.95
FSSF75	7.5 Gallon Kit (60 lbs.)	\$325
FSSF15	15 Gallon Kit (120 lbs.)	\$595

Flexible, Expanding Urethane Foam

A 2 part, 2lb. waterblown polyurethane foam system that works beautifully for props, displays and simulated body parts. Compares favorably to the popular polysoft compound. Because this product in not self-skinning, we recommend using it to back layers of latex in a gypsum mold. This enables you to turn your own masks into soft, but solid objects that will hold their shape. The expansion ratio of up to 35 to 1 makes it very cost effective. Kits are packaged in logical ratios of 2 parts B to 1 part A: One quart of B to one pint of A for example. One and a half quarts will expand to fill over two and a half five gallon buckets!



FEFQ5	1.5 Quart Kit	\$29.95
FEF15	1.5 Gallon Kit	\$69.95
FEFG75	7.5 Gallon Kit (60 lbs.)	\$300
FEFG15	15 Gallon Kit (120 lbs.)	\$545

Rigid Expanding Urethane Foam

A 2 Part, 2.5 lb. density expanding foam which goes from liquid to solid in under 2 minutes. Expands to over 30 times its original volume. One qt. of A/B combined yields 7-1/2 gallons of rigid foam. Castings made from this material are very lightweight, have excellent surface detail and strength. Recommended for casting in silicone molds. Great for tombstones, wall plaques and mass produced props. Has an easy 1 part B to 1 Part A mixing ratio.



REF1QK	1 Quart Kit	\$19.95
REF1GK	1 Gallon Kit	\$49.95
REF2GK	2 Gallon Kit	\$89.95
REF5GK	5 Gallon Kit	\$225.95

Paasche H Airbrush Set

The Paasche H is one of the most popular airbrushes among SPFX artists. It's also the airbrush of choice for painting masks because of its ability to handle thicker paint mediums such as mask paint. The model H is a single action, external mix and easy to clean. It comes with three different paint head assemblies for tackling almost any paint medium. Also a 6' air hose, 1/4 oz. color cup, 1 oz. bottle assembly, 3 oz. bottle assembly, 1 oz. extra bottle and cap, 2 wrenches and 1 airbrush hanger. Excellent for painting foam latex creatures as well. **Tip:** The single action brush has one trigger that releases air and pulls paint simultaneously from the cup through the diagonal paint assembly. Paint flow is adjusted by opening or closing the paint head, much like a water facet. This simple construction is what makes this airbrush easier to work with. Double action airbrushes allow the user to control the air flow and paint flow with one trigger. They are more finely constructed and suitable only for thinner paint mediums.

PHAK1 Paasche H Airbrush Set \$69.95



Compressor Info: The Monster Makers is not currently stocking air compressors, but we are happy to tell you that the Paasche is compatible with most models on the market. It has a standard hose fitting that allows it to work with any industrial compressor. For painting masks you will need a 1HP minimum model for spraying mask paint. Sears sells a variety of models with prices starting at \$199. Their entry level model is a 3 HP, 15 Gal. portable. The air tank keeps it from running continuously. This is a plus, because many industrial compressors are a loud. Need more info on compressors? Give us a call! We'd be happy to help you locate a suitable model.

Small Craft Sticks

What can we say about this item except that we use these in abundance day in and day out. Craft sticks are great for mixing small batches of chemicals, paints and all kinds of substances. A must have around the shop. Comes 1000 to a box.



SCS1000 Box of 1000 \$7.95

Paint Strainers

Say goodbye to lumps in your paint and any other pourable liquid compound that needs to be filtered. This handy throw away strainer has a medium gauge netting that's ideal for straining paint, latex and much more. Handles a wide range of liquid viscosities.



PMS25 Paint Strainer - 25 Pack \$5.95
PMS100 Paint Strainer - 100 Pack \$19.95
PMS1000 Paint Strainer - 1000 Pack \$135.95

Jumbo Craft Sticks

Also known as tongue depressors in the medical trade. These are the big brother of the small craft sticks. Better for mixing larger batches of paints and chemical mixtures. Also useful for scraping the side of the bowl for mixing in gelling agent when you don't have access to a rubber spatula.



LTD500 Box of 500 \$9.95
LTD500C Case of 10 Boxes \$74.95

Paint Mixing Paddles

Paint mixing paddles for when you have a large batch of material to process but not enough for an electric paint mixer. Still bumming these from the neighborhood paint store? Well we found a great source for this useful item just so we can offer them to you.



LPMS25 Mixing Paddles - 25 Pack \$4.95
LPMS100 Mixing Paddles - 100 Pack \$12.95
LPMS1000 Mixing Paddles - 1000 Pack \$89.95

GI-1000

A general application, tin based silicone molding material that has been an industry standard for years. GI-1000 is a two part flexible rubber system for making all kinds of molds where detail reproduction is vital. Ideal for sculpture reproduction where undercuts necessitate a flexible mold. Can be used to cast virtually any material without the need for a mold release. Great for model prototypes in epoxy, urethane and can even be used for baking foam latex. Will withstand temperatures up to 400°F. Comes as a two part system with a white base component and a blue catalyst.



GI-1000Q	GI-1000 Quart Kit	\$34.95
GI-1000G	GI-1000 Gallon Kit	\$129.95
GI-10005G	GI-1000 5 Gallon Kit	\$435.95

Sytheskin™

Our new 2 part translucent silicone that is designed for static figures and displays. This is a tin based, clear silicone with silicone oil already added to give greater pourability, mixability and improved air release. Can be tinted intrinsically with oil based paints or silicone pigment concentrates and used as a base to make a silicone paint medium. Not recommended for animatronic characters. Shore A-20.



SYNTHQ	Sytheskin Quart Kit	\$34.95
SYNTHG	Sytheskin Gallon Kit	\$129.95
SYNTH5G	Sytheskin 5 Gallon Kit	\$435.95

Easy Silicone Paint Formula

Here is a simple recipe for making translucent silicone paint that will stick to many tin based silicone skins:

In a small cup, mix 1 part **Sytheskin** to 1 part **Ultra Fast Catalyst**. Tint with small amounts of oil paint to your liking. Mix well. Next, mix in 5 to 8 parts mineral spirits to thin. Stipple or brush paint onto cast silicone skin. This will give you approximately 15 - 20 minutes work time. Layer with varying color washes for a more natural effect. Powder with talc or cabosil and blot with a damp paper towel to remove the shine.

Thixotropic Additive

For those that prefer to do a brush up technique when making molds, this is a very useful additive. Most silicone compounds are designed to be poured and will run off your model, seeking the lowest point. By first adding 3% of the thixo additive to 100 parts base and then a 50/50 blend of the standard activator and Ultra Fast to vulcanize the base, you can make a completely brushable medium that won't run off of your pattern. Works best when used together with the Ultra Fast Catalyst.

DCTA4	Thixo Additive 4 oz.	\$14.95
--------------	-----------------------------	----------------

Ultra Fast Catalyst

If time is short and you need to safely decrease your demold time, then the Ultra Fast Catalyst will do the job. By substituting percentages of the standard catalyst with Ultra Fast, you can turn silicone molds over much quicker. This will also shorten pot life so care must be taken especially when de-airing.

SIUFC8	Ultra Fast Catalyst 8 oz.	\$11.95
SIUFC32	Ultra Fast Catalyst 32 oz.	\$39.95
SIUFCG	Ultra Fast Catalyst Gallon	\$165

Silicone Oil 100CS

You can safely add up to 10% of this silicone oil to GI-1000 without jeopardizing tear strength. This will soften the silicone and aid in the de-aerating process. It also improves pourability for very intricate molds. This silicone oil can also be used as a mold release for foam latex molds made of stone.

SO10016	Silicone Oil 16 oz.	\$12.95
SO10032	Silicone Oil 32 oz.	\$24.95
SO100G	Silicone Oil Gallon	\$84.95

Silicone Catalyst Accelerant

Also known as Stannous Octoate. By adding very small amounts of this catalyst, you can speed cure any Tin based silicone. Silicone can be made to cure almost instantly or in as short a time as desired. A lifesaver in a pinch. Will cause some reduction in tear strength. Much more potent than the Ultra Fast! Not recommended for silicone that is going to be de-aired.

STSCA1	1 oz. Bottle	\$9.95
STSCA2	2 oz. Bottle	\$16.95
STSCA4	4 oz. Bottle	\$25.95

Gelatin

Here is an old material that has made quite a comeback within the make-up F/X community. This is the base component used in various gelatin formulations, comprising about 20% of the mixture. Yields a very realistic, translucent, skin-like material that is inexpensive when compared with silicone and urethanes. Can also be used for prop heads and body parts where permanency is not required. This is a 300 blood grade derived from Pork.

GEL1	300 Bloom Gelatin - 1 lb.	\$11.95
GEL5	300 Bloom Gelatin - 5 lbs.	\$49.95
GEL20	300 Bloom Gelatin - 20 lbs.	\$178

Sorbitol

Used in the real world as an alternative sweetener in foods. In the make-up F/X world sorbitols' main use is as a preservative for gelatin formulations. Also increases tear strength, moisture retention and controls swelling. This is a very syrupy 70% solids solution. Used at around 40% in typical gelatin formulations.

SORBQ	Sorbitol - Quart	\$4.95
SORBG	Sorbitol - Gallon	\$11.95
SORB5G	Sorbitol - 5 Gallons	\$54.95

Glycerin

A softening agent and humectant that works great as a plasticizer in gelatin formulations. This is a 99.7% pure grade. Used up to 35% in typical gelatin formulas.

GLY1Q	99.7% Glycerin - Quart	\$6.95
GLY1G	99.7% Glycerin - Gallon	\$19.95
GLY15G	99.7% Glycerin - 5 Gallons	\$72.95

Zinc Oxide Powder

In gelatin recipes, zinc oxide is used primarily as an opacifier and may help as a crosslinking agent to aid in keeping the mixture combined. Especially when used against the skin. Comes in a 200 mesh white powder form.

ZOP2	Zinc Oxide - 2 oz.	\$4.95
ZOP4	Zinc Oxide - 4 oz.	\$7.95
ZOP8	Zinc Oxide - 16 oz.	\$19.95

Premixed Gelatin Formula

This is our new premium, pre-mixed, Gelatin blend which is based on a special formulation used in a number of Hollywood F/X Shops. Comes in precast blocks that are ready to be melted down in a microwave and transferred into your molds. Works best in room temp epoxy mold systems. (See page 11 for more info on our epoxy compounds.)



The premixed gelatin blend comes clear but can be tinted with our cosmetic powder pigment or off the shelf ground, pancake make-up. Adhere finished appliances with Pro-Adhesive or Prosaide medical adhesive. We suggest that molds be made with epoxy faced (ES-211) Ultra Cal to prevent steam lakes. For finer blending edges, it is best to have a flat bottom to the mold so that it can be closed with greater precision.

GPM8	Gelatin Block - 8 oz.	(Clear)	\$11.50
GPM25	Gelatin Block - 2.5 lb.	(Clear)	\$34.95
GPM5	Gelatin Block - 5 lb.	(Clear)	\$59.95

Watertrap™

A naturally occurring potassium silicate powder that acts to sequester and block the effect of water. In gelatin formulas, Watertrap imparts excellent resistance to water in gelatin make-up appliances, making them less susceptible to breakdown by perspiration.

WTFA8	Watertrap 8 oz.	\$9.95
WTFA1LB	Watertrap 1 - 9 Lbs.	\$19.95 per.
WTF16M	Watertrap 10 Lbs. or more	\$17.95 per.

Cosmetic Grade Pigment

Use this fine grade, highly pigmented powder to impart a flesh color to your gelatin recipe. Typically used as 1% to 2% of the overall mixture. Medium Fleshtone Color. Can be used in many other cosmetic applications.

CGPFL2	Cosmetic Grade Pigment 2 oz.	\$4.95
CGPFL4	Cosmetic Grade Pigment 4 oz.	\$8.95
CGPFL16	Cosmetic Grade Pigment 16 oz.	\$14.95

Methyl Cellulose Powder

Here is a cold water soluble powder that dissolves easily in water. Great for simulating all sorts of gooey bodily fluids from thick to thin. With this powder you do **not** need to dissolve it first in boiling water and then refrigerate to cause it to thicken. Simply mix the powder into room temperature water, add color if desired. Then add 10% **Methyl Cel Activator** per 100% solids and shake well. That's all it takes for instant goo! Can be made from runny to paste-like by adding more powder. **Note:** 3 oz. (84 grams) of powder will make approximately 1 Quart of a KY Jelly consistency blend. 8.4 grams of activator would be needed to thicken this blend. For blends that are to be stored we recommend using the Dantoguard Preservative.



Cold Water Soluble Powder

MCP2	Methyl Cel Powder 2 oz.	\$7.95
MCP4	Methyl Cel Powder 4 oz.	\$11.95
MCP8	Methyl Cel Powder 8 oz.	\$19.95
MCP16	Methyl Cel Powder 16 oz.	\$29.95
MCP25	Methyl Cel Powder 2.5 lbs.	\$69.95

Cold Water Activator

MCPA2	Methyl Cel Activator 2 oz.	\$2.50
MCPA4	Methyl Cel Activator 4 oz.	\$3.95
MCPA8	Methyl Cel Activator 8 oz.	\$6.95
MCPA16	Methyl Cel Activator 16 oz.	\$10.95

Food Grade Color Concentrates

We've prepared a nice selection of water soluble colored concentrate powders for mixing into your homemade goo and slime compositions. Almost any effect can be achieved through use of these very potent colors! Please note that the white is a liquid dispersion. Depending on availability, substitution of other liquid dispersions for powders is possible.



PCR402	Red #40	(56 grams)	\$5.95
PCR404	Red #40	(113 grams)	\$8.95
PCR408	Red #40	(227 grams)	\$14.95
PCY2	Yellow#5	(56 grams)	\$4.95
PCY4	Yellow#5	(113 grams)	\$7.95
PCY8	Yellow#5	(227 grams)	\$12.95
PCCBU2	Blue	(56 grams)	\$12.95
PCCBU4	Blue	(113 grams)	\$19.95
PCCBU8	Blue	(227 grams)	\$37.50
PCCW2	White	(2 oz.)	\$4.50
PCCW4	White	(4 oz.)	\$7.50
PCCW8	White	(8 oz.)	\$12.50
PCCBL2	Black	(56 grams)	\$9.95
PCCBL4	Black	(113 grams)	\$16.50
PCCBL8	Black	(227 grams)	\$29.95
PCCG2	Green	(56 grams)	\$17.95
PCCG4	Green	(113 grams)	\$29.95
PCCG8	Green	(227 grams)	\$49.95

Monster Makers Creature Slime™

Here is our new product that matches the popular Ultra Slime™, but at a much nicer price! Makes a very tacky and stringy slime with long threads when pulled. Comes translucent, but we can color to specification in quantities of 1 gallon or more. Non-Toxic. Can be thinned with water and tinted with food coloring.



Have a movie in production? Contact us for custom formulations on quantities of 5 gallons or more. We can match or formulate almost any color and consistency of slime you are looking for. We also have a more gelatinous formula available called **Ecto-Ooze™**. Call for pricing and sizes.

POLYSLQ	Creature slime - 32 oz.	\$19.95
POLYSLG	Creature slime - Gallon	\$69.95
POLYSL5G	Creature slime - 5 Gallons	\$300

Dantoguard Preservative

Solutions made with methyl cellulose will go rancid if left unrefrigerated. Mixtures can be made to last months by adding 3 parts Dantoguard per 100 parts solids into the blend. Offers a wide spectrum bactericide to keep those little microbes at bay. Works best when added before the activator in Methyl Cellulose Blends. Can also be added to any water based system that is subject to spoilage due to bacterial growth. Compositions containing Dantoguard are not to be used in the mouth.



DANT2	Dantoguard	2 oz.	\$4.95
DANT4	Dantoguard	4 oz.	\$7.95
DANT8	Dantoguard	8 oz.	\$14.95
DANT16	Dantoguard	16 oz.	\$24.95

Easy, Movie Blood Kit



For those looking to make their own professional, SPFX movie blood, we've put together a complete kit for you. Comes with everything you need to make very realistic Methylcel blood for your next stage or film production. Each kit comes with powdered coloring, thickener, activator, flow promoter and preservative. All you add is water! Extra thickener, activator and color is included so you can alter the formula to make different shades or grades. Not to be used in the mouth. This formula will stain some clothing and skin. Test first. Comes with complete instructions.

BKE1G **1 Gallon Easy Blood Kit** **\$24.95**

Powdered Colorants

These are the most popular food grade colorants used in theatrical blood recipes. All colors come in powder form and are water soluble. We have two reds. Red #40 has a more orange look. Red #33 is the most popular and most realistic. Some experimentation may be needed to determine which suits your needs. Use green to give your blood a darker look. All colors are intermixable and extremely potent. A little goes a long way!



PCR402	Red #40	(56 grams)	\$5.95
PCR404	Red #40	(113 grams)	\$8.95
PCR408	Red #40	(227 grams)	\$14.95
PCR332	Red #33	(56 grams)	\$24.95
PCR334	Red #33	(113 grams)	\$49.95
PCR338	Red #33	(227 grams)	\$84.95
PCY2	Yellow#5	(56 grams)	\$4.95
PCY4	Yellow#5	(113 grams)	\$7.95
PCY8	Yellow#5	(227 grams)	\$12.95
PCCR2	Green	(56 grams)	\$17.95
PCCR4	Green	(113 grams)	\$29.95
PCCR8	Green	(227 grams)	\$49.95

Flow Promoter

A less expensive photoflow substitute for blood formulas. Added to prevent artificial blood from beading up unnaturally. Once added, blood should not be used in the mouth. Recommended at 6 oz. per gallon of blood.



BFLP8	8 oz. Flow Promoter	\$6.95
BFLP16	16 oz. Flow Promoter	\$9.95
BFLP32	32 oz. Flow Promoter	\$14.95
BFLP128	1 Gallon Flow Promoter	\$49.95

Dantoguard Preservative

A broad spectrum bactericide which can be added to theatrical blood recipes to prevent spoiling while in storage. Keeps blood from having to be refrigerated. Not to be used for blood recipes that will go in the mouth. Use 1% to 3% of total solids. Some blood formulas treated with Dantoguard can resist spoilage for months without refrigeration.



DANT2	Dantoguard 2 oz.	\$4.95
DANT4	Dantoguard 4 oz.	\$7.95
DANT8	Dantoguard 8 oz.	\$14.95
DANT16	Dantoguard 16 oz.	\$24.95

Sorbitol Liquid

Tired of using up all of your mom's Corn Syrup to make fake blood? Well here's a good substitute that will help keep the peace at home. Blood formulas made with Sorbitol do stain a bit more than corn syrup. Can also be used in various gelatin formulations to increase tear strength, control moisture and swelling. This is a very syrupy 70% solids solution.



SORBQ	Sorbitol - Quart	\$4.95
SORBG	Sorbitol - Gallon	\$11.95
SORB5G	Sorbitol - 5 Gallons	\$54.95

Tooth Shade Acrylic Kits

A 2 part powder (Polymer) and liquid (monomer) self curing, dental acrylic system that sets to a very hard plastic when combined. Can be cast directly into alginate and silicone molds without a mold release. An excellent product for making very realistic teeth, eyes and horns for masks or aminatronic and static displays. We have seven shades to choose from ranging from light to dark. Please specify shade number when ordering. **(Note:** The self cure monomer will work for both gingiva and tooth shade resin systems. See gingiva acrylic for prices.)



- #59 (Our lightest shade. Typical of a young, non-smoker.)
- #62 (Typical shade of a non-smoker age 25-45.)
- #65 (Typical Shade of a person in their 50's. Non-smoker.)
- #67 (Typical Shade of a person in their 60's. Non-smoker.)
- #81 (Typical shade of a moderate smoker in their late 60's.)
- #84 (Typical shade of a heavy smoker.)
- #RTSC (Not a shade to be found in the dental field. But perfect for those nasty Monsters and folks with very bad teeth.)

TSAP1	1 oz. Acrylic Polymer only	\$5.95
TSAP2	2 oz. Acrylic Polymer only	\$10.95
TSAP4	4 oz. Acrylic Polymer only	\$19.95
TSAP8	8 oz. Acrylic Polymer only	\$27.50
TSAPS3	3 oz. Set (2 oz. Pwd. & 1 oz. Lq.)	\$13.95
TSAPS6	6 oz. Set (4 oz. Pwd. & 2 oz. Lq.)	\$22.95
TSAPS12	12 oz. Set (8 oz. Pwd. & 4 oz. Lq.)	\$33.95

Acrylic Teeth



Normally used by dental technicians for denture fabrication, these teeth are virtually indistinguishable from real teeth. We offer an (average) shade 65 and a (Dark) shade 81. Perfect for creating your own custom dentures. Also useful in static displays or attach them to the underskull jaws of a mechanical mask. Choose from our Large size (L) or average size (A) teeth sets. Please specify shade when ordering.

ATUA6A	(A) Upper Anterior's (Top 6 Front)	\$11.95
ATUL6A	(A) Lower Anterior's (Bottom 6 Front)	\$11.95
ATUA28A	(A) Complete 28 Teeth Set	\$24.95
ATUA6L	(L) Upper Anterior's (Top 6 Front)	\$11.95
ATUL6L	(L) Lower Anterior's (Bottom 6 Front)	\$11.95
ATUA28L	(L) Complete 28 Teeth Set	\$24.95

Pink Dental Acrylic (Gingiva)

A 2 part, self curing, rigid dental acrylic used for simulating the fleshy gum tissue of the mouth. By combining this with our pre-made acrylic teeth or your own tooth shade castings, you can create an endless variety of very realistic prosthetic dentures. Also useful for the gums in static character displays and mechanical masks. Available in 7 shades: **Veined Pink, #1 Non-Fibered (average, opaque shade), #2 Special Fibered (Lightly translucent), #49 Light Ethnic, #52 Moderate Ethnic, #51 Dark Afro American and Purple Plain (Dark, Afro-American).** Please specify color when ordering. (Please see our website for a complete color chart of our gingiva acrylics).



DAS3	3 oz. Set (2 oz. Powder & 1 oz. Liquid)	\$7.95
DAS6	6 oz. Set (4 oz. Powder & 2 oz. Liquid)	\$14.95
DAS12	12 oz. Set (8 oz. Powder & 4 oz. Liquid)	\$28.95
DAS24	24 oz. Set (16 oz. Powder & 8 oz. Liquid)	\$54.95

PDA4	4 oz. Gingiva Powder only	\$9.95
PDA8	8 oz. Gingiva Powder only	\$19.95
PDALB	1 lb. Gingiva Powder only	\$39.95
DAM2	2 oz. Self Cure Acrylic Monomer	\$4.95
DAM4	4 oz. Self Cure Acrylic Monomer	\$7.95
DAM8	8 oz. Self Cure Acrylic Monomer	\$14.95
DAMQ	Quart Self Cure Acrylic Monomer	\$39.95

Clear Acrylic Kits

We have two types of clear acrylic available. The first is a fast, self cure system. Works well for clear castings of all sorts, including prosthetic eyes. Comes with a blue tinted monomer to off-set the yellow cast associated with clear self cures. Our second clear compound is a heat cure system which has a longer cure time and is the preferred system for the highest quality ocular work. The longer cure and heat application allows for non-porous and optically clear casts. A pressure pot is recommended for both systems to achieve the best possible results. **Please note** the abbreviations (P) for powder and (L) for liquid.



CSC3	3 oz. Set - Self Cure - 2 oz. (P) & 1 oz. (L)	\$7.95
CSC6	6 oz. Set - Self Cure - 4 oz. (P) & 2 oz. (L)	\$14.95
CSC12	12 oz. Set - Self Cure - 8 oz. (P) & 4 oz. (L)	\$28.95
CHC3	3 oz. Set - Heat Cure - 2 oz. (P) & 1 oz. (L)	\$7.95
CHC6	6 oz. Set - Heat Cure - 4 oz. (P) & 2 oz. (L)	\$14.95
CHC12	12 oz. Set - Heat Cure - 8 oz. (P) & 4 oz. (L)	\$28.95

Complete Theatrical Dental Kits

Starter Dental Kit



The **Starter Dental Kit** is an entry level kit designed to quickly get you up and running in the art of teeth making. Comes with enough material to do several full denture sets. **INCLUDES:** 1/2 Lb. Dental Alginate, 1 Medium Dental Tray Set, 1 lb. Ultra Cal 30, 1 Medium Base Former, 3 oz. Pink Acrylic Set, 3 oz. Tooth Shade Set, 2 oz. Alcote, 1 small rubber mixing bowl, 6 Tongue Depressors. Fantastic Dentistry Instructional Video. (Tooth models shown, not included.)

SDKV	Starter Dental Kit with Video	\$54.95
SDKNV	Starter Dental Kit (no Video)	\$39.95

Standard Dental Kit



The **Standard Dental Kit** is set-up to provide everything you need to fabricate dental appliances for a small group of people. Comes with enough material to do at least 6 full denture sets. **INCLUDES:** 1 Lb. Dental Alginate, Complete 3 size Dental Tray Set, 3 lbs. Ultra Cal 30, 2 Base Formers, 3 oz. Pink Acrylic Set, 3 oz. Tooth Shade Set, 4 oz. Alcote, 1 small rubber mixing bowl, 6 Tongue Depressors, 1 set Premade Upper Anterior Teeth, Fantastic Dentistry Instructional Video. (Tooth models shown, not included.)

STDKV	Standard Dental Kit with Video	\$74.95
STDKNV	Standard Dental Kit (no Video)	\$69.95

Deluxe Dental Kit



The **Deluxe Dental Kit** is geared towards teeth fabrication for medium group sizes where a variety of teeth styles may be required. Comes with enough material to do at least one dozen full denture sets. **INCLUDES:** 1 Lb. Dental Alginate, 2 Complete 3 size Dental Tray Sets, 3 lbs. Ultra Cal 30, 3 Base Formers, 6 oz. Pink Acrylic Set, 6 oz. Tooth Shade Set, 8 oz. Alcote, 1 medium rubber mixing bowl, 1 Dozen Tongue Depressors, 1 Upper Anterior Tooth Set, 1 Lower Anterior Teeth Set, Fantastic Dentistry Instructional Video.

DDKV	Deluxe Dental Kit with Video	\$114.95
DDKNV	Deluxe Dental Kit (no Video)	\$99.50

Super Deluxe Dental Kit



The **Super Deluxe Dental Kit** is a professional sized kit stocked with enough material to start a small business!. Sufficient material is provided to do at least 18 full denture sets. **INCLUDES:** 2 Lbs. Dental Alginate, 3 Complete 3 size Dental Tray Sets, 5 lbs. Ultra Cal 30, 4 Base Formers, 12 oz. Pink Acrylic Set, 12 oz. Tooth Shade Set, 16 oz. Alcote, 3 Upper Anterior Tooth Sets, 3 Lower Anterior Tooth Sets, 1 medium rubber mixing bowl, 2 Dozen Tongue Depressors. Fantastic Dentistry Instructional Video.

SDDKV	Super Deluxe Dental Kit with Video	\$199
SDDKNV	Super Deluxe Kit (no Video)	\$185

Flexibowls

These are flexible bowls for mixing small to medium amounts of stone and alginate. To clean, simply flex the bowl after the material has set. The 3" holds 5 fluid oz., 5" holds 20 fluid oz., 6" holds 28 fluid oz. and the 7" holds 64 fluid oz.



FMB4	3" Diameter Bowl	\$4.95
FMB5	5" Diameter Bowl	\$7.95
FMB6	6" Diameter Bowl	\$8.95
FMB7	7" Diameter Bowl	\$10.95
FMBS	Complete 4 size set	\$24.95

Alcote Separator

A liquid tin-foil substitute for use on stone tooth models. Creates a thin barrier between the stone and dental acrylic and allows for easy separation. You can also use this product to float clay sections from a lifecast for advanced prosthetic work.



ATFS4	4 oz. Alcote	\$4.50
ATFS8	8 oz. Alcote	\$6.75
ATFS16	16 oz. Alcote	\$9.50
ATFS32	32 oz. Alcote	\$14.95

Methacrylate Powder Tints

Here is another real find. A very potent, powder concentrate that is formulated specifically for tinting methylmethacrylate systems. Great for getting that specific color you need without trying every acrylic shade on the planet. Allows you to modify pre-existing shades or to create your own. Works for both self cure and heat cure systems of clear, gingiva and tooth shade colors. Also works for tinting other non methacrylic resin systems. Available in Red, Yellow, Blue, Black, Brown and White. Please specify color when ordering.



MPT1K	6 Color Tint Set (1 oz. Each)	\$72.95
MPT2K	6 Color Tint Set (2 oz. Each)	\$135
MPT1C	Individual Colors 1 oz.	\$14.95
MPT2C	Individual Colors 2 oz.	\$24.95

Dental Trays

A reusable plastic tray for making teeth impressions. Simply fill the tray with dental alginate. Place in the mouth and bite down. Once the alginate is solidified, remove and fill with stone to make the positive mold.



PDTSS	Small Tray set (Upper / lower)	\$1.95
PDTMS	Medium Tray set (Upper / lower)	\$1.95
PDTLS	Large Tray set (Upper / lower)	\$1.95
PDC3S	Complete 3 size set (Upper / lower)	\$4.95

Base Formers

Use these handy rubber molds to make nice symmetrical bases for your tooth models. Simply fill with stone, level off, then place the tooth casting on the form. Makes your models easier to handle and gives them that professional look.



RDBFM	Med. Former	\$6.95
RDBFL	Large Former	\$7.95

Acrylic Tooth Stains

A liquid resin system for characterizing custom made teeth and gums. Eight long-lasting, translucent, colors that air dry in less than 2 minutes after application. Eliminates the need for polishing. Chemically bonds directly to the tooth plastic and won't rub off.



Kit contains: 1/2 ounce each of custom staining liquids: White, Red, Grey, Violet, Blue, Yellow, Orange, Brown, Clear. Also included is 1/2 ounce of Thinner. Please specify color when ordering individually.

ATSK9	9 Color Tooth Stain Kit	\$59.95
ATSC	Individual Stain Color (1/2 oz.)	\$6.95
ATSKT	1/2 oz. Thinner	\$4.95
ATSCCLH	Clear Coat 1/2 oz.	\$6.95
ATSCCL2	Clear Coat 2 oz.	\$14.95
ATSCCL4	Clear Coat 4 oz.	\$24.95

Spirit Gum

The old stand-by adhesive for years. Can be used for prosthetic application and is great for gluing beards, mustaches and lace hair pieces. Not nearly as strong as Pro Adhesive. Use Isopropyl Myristate for removal.



SGA4	4 oz. Spirit Gum	\$5.95
SGA8	8 oz. Spirit Gum	\$8.95
SGA16	16 oz. Spirit Gum	\$16.50

Isopropyl Myristate

A very gentle, oil based make-up remover which will remove many types of make-up including (pax) pros-aide, grease paint and many other make-up compounds and adhesives.

IMMR16	16 oz. Isopropyl Myristate	\$10.50
IMMR32	32 oz. Isopropyl Myristate	\$17.95
IMMR128	1 Gallon Isopropyl Myristate	\$49.95
IMMR5G	5 Gallons Isopropyl Myristate	\$224.50

Pro Adhesive

With the sky rocketing price of Prosaide, Pro-Adhesive comes along at just the right time. Works just like prosaide but costs a lot less. Compatible with a variety of prosthetic materials but is especially useful for latex foam appliances. Can also be mixed with acrylic colorants and thinned with water to make Pax Paint for pre-painting appliances. Pro-Adhesive is an acrylic emulsion that adheres very strongly to the skin. We recommend a gentle remover like Isopropyl Myristate for safe removal.



PROA4	4 oz. Pro-Adhesive	\$8.50
PROA8	8 oz. Pro-Adhesive	\$13.95
PROA16	16 oz. Pro-Adhesive	\$19.95
PROA32	32 oz. Pro-Adhesive	\$35.95
PROAG	Gallon Pro-Adhesive	\$119.50

Woochie Bald Cap

This is a good quality cap that fits small to medium head sizes. Has a long nape and thin edges. Works great for most life-casting jobs.



MMWSBC	Bald Cap	\$10.95
---------------	-----------------	----------------

Make-Up Application Kit

Here is a great set of make-up brushes and make-up applicators to get you started. Comes with 1 spatula, 4 foam applicators, 1 powder



brush and five assorted red sables ranging from 1" to very fine. Each set comes in a sturdy, clear plastic case with 12 make-up, mixing pots. A nice set for beginners or professionals alike.

MAK6	Make-Up Application Set w/ Case	\$18.95
MAC1	Empty Make-up Case	\$5.95

Duo Surgical Adhesive

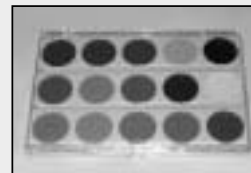
A popular mild latex based surgical adhesive which is commonly used by make-up artists to seal appliances or attach foam to sensitive areas such as near eyes. Works particularly well for blending in appliance edges. If you are looking for a mild latex adhesive then this is the best choice.



DSAHO	Duo 1/2 ounce tube	\$10.95
--------------	---------------------------	----------------

Rubber Mask Grease Paint

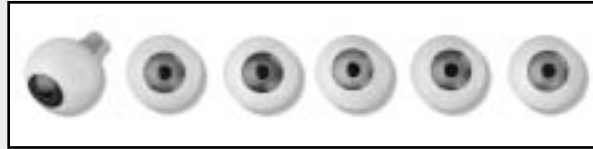
Mehron 15 Color, Rubber Mask Grease Palette is a great economical choice for professional f/x artists. It is very effective in covering foam latex prosthetics, bald caps, etc. Provides complete coverage and easy blending necessary for realistic results. Includes: Soft Beige, Oriental, Blue, Lt Flesh, Dark Sunburn, Yellow, Dk. Flesh, Green, Med. Flesh, White, Black, Deep Tan, Red, Lt Tan and Ebony Brown.



RMGP15	15 Color Set	\$32.95
---------------	---------------------	----------------

Full Round Acrylic Eyes

This is our economy full orbit eye. Great for mechanical masks and displays. Nice iris detail and very affordable. Available in average human, 26 mm size. Please specify colors when ordering.



TDFOAE **1 Pair** **\$9.95** **Dk. Brown Brown Blue Green Gray Violet**



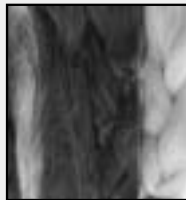
Half Round Acrylics Eyes

An excellent quality half orbit eye with extra fine detailing in the iris and vibrantly colored. Suitable for masks, props and displays. Great quality for the price. 26mm.

Brown Hazel Cobalt Green Violet Lt. Gray Blue **TDHRAE** **1 Pair** **\$11.50**

Mask Hair

A nice quality, human-like, Kanekolon hair which can be layed on or punched in latex masks and props. Works best when applied in long lengths. Also works great for beards, mustaches and eyebrows. Your choice of 5 colors: Dark Brown, Medium Brown, Black, White and Gray. Please specify color when ordering. Each bundle is approximately 4" wide by 5ft. when spread out. Some colors are subject to availability.



MMKMH **5ft. Length** **\$12.50**

Monster Makers T-Shirt

We've had a lot of requests for this one. So, by popular demand we are proud to offer this heavy weight, 50/50 blend T-Shirt emblazoned with the world famous red and black Monster Makers Logo. So if you are a diehard Monster Maker than this might be just the thing you need. Available in XL size only. We have a limited supply so get 'em while you can!



MMLTSXL **Monster Makers T-Shirt** **\$14.95**

Premade Horns Sets

Back again by popular demand, a selection of premade horns for your mask and monster creations. These are cast from durable, rigid urethane and ready for finishing. We have 3 styles to choose from. Set (A) are 6" stylized demon horns with a unique design. Horn Set (B) are super detailed ramhorns measuring 5.5" taken directly from the real thing. And lastly, Set (C) are 4" demon horns that will work well in just about any design where horns can be used. All horns are lightweight and come in a white resin color, ready to be painted. We recommend first base coating with automotive spray primer. You can than apply color and or stain using any acrylic paint medium. Use epoxy or super glue for adhering to your creation.



PMHSA **Horn Set (A)** **\$14.95**
PMHSB **Horn Set (B)** **\$14.95**
PMHSC **Horn Set (C)** **\$14.95**
PMHS3 **All 3 Horn Sets (A-C)** **\$39.95**

Lube-Soap Mold Release

A versatile water based soap type lubricant formulated for use as a mold separator. Excellent for plaster to plaster applications and suitable for molds that require a non-solvent mold release. It can be used full strength or diluted with water. Washes off easily with water.



LSMR16	Lube Soap - 16 oz.	\$3.95
LSMR32	Lube Soap - 32 oz.	\$6.50
LSMRG	Lube Soap - 1 Gallon	\$11.95
LSMR5G	Lube Soap - 5 Gallons	\$49.95

Syn Lube 531

Synlube 531 is a popular, non-silicone, wax based release agent that is suitable for polyurethanes, epoxies, polyester resins and silicone rubbers. It has a low viscosity, good wetting action and spreads uniformly and evenly when applied sparingly. Dries very fast. Works for casting polyurethane resin into polyurethane molds.



SL531	16 oz. Aerosol Can	\$8.50
SL531C	Case of 12 (16 oz. Cans)	\$94.95

Syn Lube 1711

Synlube 1711 is a silicone based release agent which is regarded as the industry "cure all" for tough release problems. It is suitable for polyurethanes and epoxies. Can also be used with polyesters and other thermoplastics. It has very low viscosity, good wetting action and spreads uniformly and evenly when applied sparingly. It is stable, non-corrosive and will not cause mold buildup. Available in 16-ounce aerosol cans, 12 cans to a case.



SL1711	16 oz. Aerosol Can	\$8.50
SL1711C	Case of 12 (16 oz. Cans)	\$95

Epoxy Parfilm

A relatively safe, spray separator that is commonly used for silicone molds, epoxy molds and other resin molds. This is a nice all around waxy type separator that is perfect for jobs that do not require a heavy wax separator. Creates a dry, non-oily barrier film that leaves pieces ready to paint. Great for epoxy, silicone, and fiberglass molds. Compatible with our new epoxy mold systems. Comes in an 18 oz. spray can.



EPFS18	Epoxy Parfilm - 18 oz. Can	\$12.50
---------------	-----------------------------------	----------------

Chemlease 88

Chemlease 88 is a special non-silicone, dry lubricant based on a fluorocarbon telomer. This release works very effectively with a wide variety of molding resins. It provides a clean, dry, non-oily release film with excellent slip characteristics. Available in a convenient 11 oz. spray can. Suited well for releasing patterns to be molded in any of our epoxy resin systems.



CL88MR	11 oz. can	\$14.95
---------------	-------------------	----------------

Stearate Mold Release

This is a stearate emulsion that works well for applications where a water based mold release is suited. Has a light, creamy consistency that leaves a behind a thin film when dry. Makes an excellent foam latex separator for stone and also as a non greasy plaster to plaster separator. Must be brushed on.



MFMR16	16 oz. Mold Release	\$9.00
MFMR1G	1 Gallon Mold Release	\$60
MFMR140	40 lbs. Mold Release	\$225

THE MONSTER MAKERS

MAIL ORDER TERMS AND CONDITIONS

ALL PRICES IN THIS CATALOG ARE SUBJECT TO CHANGE WITHOUT NOTICE

PAYMENT AND ORDERING INFORMATION

To place your order simply fill in the order form with the items you would like, total and compute the shipping. You can mail in your order if paying by check, money order or credit card. Or, if you have access to the World Wide Web you can use our online ordering system. You can also fax it in at 216-631-4329. All prices in this catalog are quoted in U.S. dollars and all payments must be made in U.S. currency only. **If you're sending in a bank draft from Canada you must draw from a U.S. bank branch in Canada or the order cannot be filled.** Payments by check will delay your order by two weeks since checks must clear before we can ship an order. For the fastest service, we recommend calling or ordering via our Website. The Monster Makers accepts **Visa, Mastercard, American Express and Discover** cards. Money orders will also speed up delivery time. Please make all checks and money orders payable to:

The Monster Makers. Ohio residents, please add 7% sales tax.

ORDERING DURING WINTER MONTHS

All liquid latex products including Pro-Adhesive and Duo Surgical Adhesive will spoil if allowed to freeze. To avoid this we suggest having these products shipped using the express service during winter months. We have not experienced any problems using express service for latex products.

SIMPLE ORDER FORM

An easy to use order form has been provided for your use. Each time you order, new order forms will be sent with your order. You may also create your own order form using ours as a guide or you can photocopy the original.

RETURN POLICY

If you receive a damaged, defective or incorrect item, please notify us immediately. Any Monster Makers item found to be defective will be replaced if you notify us upon receipt of the item. No returns will be accepted after 15 days. Our liability for a defective item will not exceed its replacement cost to us.

SHIPPING METHODS

The Monster Makers will ship your order by the best and most economical means possible, at our discretion. We ship by United Parcel Service (UPS), Federal Express (Fed Ex) and United States Postal Service (USPS). All books will be shipped by UPS or Priority Mail for Domestic orders. **We are unfortunately no longer accepting new overseas customers but will continue to provide service for our present overseas customers.**

DISCLAIMER

Most of the items sold through this catalog are considered non-toxic. However, Dental Acrylics and Urethane Compounds are some of the exceptions. We have tried to provide precautionary warnings on all materials that present an obvious or potential health hazard. However, the responsibility for safe use of any product listed in this catalog rests solely on the buyer or user. No warranty either expressed or implied is given and The Monster Makers assumes no liability for the use or misuse of any item sold through this catalog, regardless of the legal theory advanced. Individuals using these products should refer to the Manufacturer's Safety Data Sheet (MSDS) and product instruction sheet for applicable warnings and safe handling procedures. Always use proper ventilation, respirators, safety glasses, chemical resistant gloves and a healthy dose of common sense when working with hazardous or suspected hazardous materials. By purchasing any product(s) in this catalog you agree to use at your own risk and hold The Monster Makers and employees harmless for any injuries that may be suffered during the voluntary use of these products. If you do not agree to the terms set forth herein, you should not purchase items from this catalog. The Monster Makers also has the right to refuse any sale to any customer and will use this right if warranted. You must be at least 18 years of age to make a purchase from this catalog or have written, adult authorization to do so.

CUSTOM WORK

The Monster Makers accepts custom prototyping and moldmaking work throughout the year. If you're looking to have a custom mask, prop or display item made for your company, we would be happy to provide you with a free quote. Please call or e-mail us for more information.

INSTRUCTIONAL SEMINARS

The Monster Makers holds instructional seminars on a variety of topics such as Animatronics, Mask-Making, Foam Latex and Sculpting. For a current schedule, please check our website or contact us by e-mail or phone .

SHOP VISITS

The Monster Makers maintains regular shop hours from 9:30 AM to 5:00 PM Monday - Thursday. We are closed on Fridays except during the busy season (Sept. 1st - October 25th). Though we are mainly a mail order facility, we do allow visitors by appointment only (so as not to disrupt our work flow.) If you would like to visit our facility to pick-up an order, please be sure to notify us ahead of time so that we can schedule you in and to insure that we have everything available for you. Please do not just show up at our door unannounced! You will most likely be turned away and asked to schedule a proper visit.

TO CONTACT US:

THE MONSTER MAKERS

7305 Detroit Avenue, Cleveland, Ohio 44102
Phone: (216) 651-SPFX (7739) Fax: (216) 631-4FAX (4329)
<http://www.monstermakers.com>
E-MAIL: sales@monstermakers.com

Lee Romaine



Lee Romaine is one of the newest members of the Hollywood monster making scene. He has been very fortunate to work with such industry greats as Steve Johnson, Kevin Yagher, Jim Henson's Creature Shop and Todd Masters among others. His work can be seen in the upcoming movies "Scooby Doo", "The Country Bears", "Windtalkers" and TV shows such as "Six Feet Under". He credits his success to hard work, his teacher and friend Dick Smith, and help from knowledgeable people like the staff of Monster Makers. Lee is excited about the future of practical visual effects and hopes to own his own company one day. Figure (A) is a full head sculpture piece for a display called, Fat Pig. (B) is entitled Happy Bob, constructed from latex and paper towels with digital manipulation. (C) is an elaborate foam latex halloween make-up created for Todd Masters 2001 Monster Bash. And (D) is called, "Needs Reading Glasses". This is a digitally manipulated lifecast. Just a few examples of Lee's growing body of work. You'll definitely be seeing more of Lee's craftsmanship on the big and little screen in the coming months and years. For inquiries and more work samples you can reach Lee at: wcruse@mindspring.com



Dan Anderson



Connecticut based Dan Anderson is a lifelong stop motion animation fan. He runs a video and illustration company and has found a way to incorporate his passion for Animation in his work. Pictured above are few examples of Dan's amazing artistry. (E, F) are foam latex puppets created from our Monster Makers Foam. When you see the armatures underneath the rubber you can really get an appreciation for the range of Dan's skills. More of Dan's fine work can be seen at: <http://pages.cthome.net/symbiosis>

Doug Henderson

Here's another friend and artist that we've been eager to show off to you. Over the years, Doug Henderson has been a teacher and mentor to many young f/x artists and IDT students at the Art Institute of Pittsburgh. Additionally, through his company, Henderson Production and Design, Doug and his wife Cathy have been active in creating quality television shows for children and producing some of the most beautiful make-ups we've seen. Below are two examples of what you can do with lots of skill and some Monster Making materials. (G) is a the head of a foam latex Gorilla that was done for a television spot. (H) is a demon make-up as good as any we've seen on Buffy. Doug is an amazing talent and happens to be one of our favorite unsung heroes as well! He can be reached through his website at: henderson@hendersonproductions.tv



Chris Gallaher



The talents of long time friend and F/X artist Chris Gallaher can be seen in a number of recent feature films and TV shows such as **Hannibal**, **The Tick** and **Bicentennial Man**. We sold Chris his first Mask Making Kit several years back and before long Chris was off to L.A. working for the likes of Steve Johnson, Rick Lazzarini and Captive Audience Studios. Coincidence? We think not! Shown above (A,B) is a finished full head sculpture ready for molding. Below (C) is the completed foam latex make-up appliance with custom teeth and contacts. Nice job Chris! Among his many talents, Chris specializes in making custom eyes for static and animated characters and is adept at many specialty molding and casting techniques. For inquiries and custom work, Chris can be contacted at Freakazoid71@aol.com

Greg McDougall



You may remember Greg McDougall from the customer gallery of our last catalog. Greg has been such a mainstay with Monster Makers over the last ten years, that we couldn't resist showing off a few more of Greg's many creations. This man has been busy. Figure (D) is a life-size silicone baby. Next (E), is an example of the major F/X contribution that Greg made as production designer on an local film called *One*. This is a Clone prop made of Monster Makers Latex and is filled with our expanding soft foam. A metal harness rests on his shoulders complete with light-up features. (F) Greg shows off his prowess for straight make-up. Can you say Chiaroscuro? (G) Another latex and foam prop. Currently, Greg is employed as an instructor with the Tom Savini Make-up School at the Douglas Education Center in Monesson, PA. For more information on Greg's ever evolving career, you can catch up at gregmcdougalfx.com on the web. If Greg keeps up this pace, we may be forced to put him in our next catalog gallery! For inquiries: mcdougallgreg@hotmail.com

Joe Lester



Bensenville, Ill is home to Joe Lester, one of the most naturally gifted sculptors we've encountered. We originally ran into Joe back in 1996 at the Fangoria Weekend of Horrors in Chicago where his portfolio was as big a hit as some of the guests! Since then, Joe has been our first choice to feature in the new catalog gallery, so we asked him if he wouldn't mind sharing a few images of his work for your enjoyment. Images (A-C) are part of the "Seven Sins" series of wall mount characters that Joe did for Design Toscano. (D) This is "Glee", one of Joe's many inspired pumpkin sculptures. Could we ever look at another pumpkin the same way again? (E) Just to show off Joe's versatility we've included The Mohican, a way cool Indian piece. (F) A recent oil based clay mask sculpture in progress. Very well done. And finally (G,H) a beautiful Terminatoresque inspired Cyborg that rivals one that is more familiar to us all. A big hearty round of applause for Joe. For inquiries, Joe can be reached at: jl Lester2000@yahoo.com



A



B

Tom Kuebler

"Like the cookie", says Ohio native, Tom Kuebler (Kēēbler) about his name pronunciation. But even if you get the name wrong, what is so very right is that Tom is simply one of the best in the business. His art and his passion is building life-sized figures out of silicone, fiberglass and other mixed media. Tom's works are not always monstrous in nature, but more along the lines of the bizarre and curious. He has created characters for museums, trade shows, theme parks, zoos and restaurants throughout the world. Shown here are a few of Tom's masterpieces (A) The ever entertaining *Mortimer and Eli*. (B) A *Gothic Vampire*, now on display in Anne Rice's museum. (C) Close-up of *Carcass Pete*. Don't draw on this guy, he's already dead! (D) A recent *Vampire* creation. (E) *The Necromancer*, a wizard who can talk with the dead. (F) *Francis Setting Eagle*. (G) *Zoga, The Oracle* (note the extra set of arms). (H) *Barnabus Bean* and his performing Rodents. - To really appreciate Tom's work you must see it in person. The characters are so lifelike it takes your breath away. For serious inquiries, Tom can be contacted via e-mail: Kuebs@dacor.net



C



D



E



F



G



H



Mark Alfrey

Hollywood is no stranger to master sculptor Mark Alfrey. Mark's work can be seen in over two dozen feature films, TV shows and commercials. And you don't have to read his resume to realize his impressive talent. Like the other artists in our gallery Mark's work speaks very well for itself. Photo (A) is a mask sculpture for Space Truckers done for Optic Nerve. (B) is a sculpture done for Angel, to be turned into a foam latex appliance. (C) is a character called Echidna, with the actress donning the finished foam latex appliance. (D) Another sculpt for a foam appliance for Buffy the Vampire Slayer. (E,F) A front and side view of a cool character called Chester. (G) A miniature version of the full Echidna character for CGI scanning. (H) A lifesize corpse prop. And finally (I) a not so friendly corpse for Buffy the Vampire Slayer--This is but a small sampling of Mark Alfrey's accomplishments and you'll be seeing more of Mark's work soon with the release of Men In Black 2. If you are a student of the craft and want to learn from one of the best, be sure to look for Mark's Video in our catalog entitled, "Mark Alfrey's Sculpting Movie Monsters", for an outstanding demonstration on how a master Monster Maker works his magic. More info on Mark's career is available on his website: <http://home.pacbell.net/big-uns/>





"It all started with a single, rubber, halloween mask", recalls company president **Arnold Goldman**, about the founding of **The Monster Makers** back in 1990. "It's really amazing to think that we've come all this way from making Halloween Masks and teaching classes in the art to becoming one of the leading SPFX supply houses in the industry." Shown here are some examples of the masks that Arnold produced over the years with the very same professional materials that his company now offers. (A) Commander Thorg. (B) Snarly. (C) The Immortal. (D) Ogre. (E) Maximus. (F) Blood Slayer. Though **Monster Makers** no longer sells masks, the company has ventured into producing high quality animatronic displays. Shown here (G) are Baba and Yagga, who are featured in the Witches Cauldron display. When asked about the future of the company, Arnold is pleased with the direction **Monster Makers** is headed. "We'll continue to offer hard to find materials and kits for both amateurs and professional F/X artists. Also, anyone who wants to produce real three dimensional creations will find the materials here to do the job. We are also offering specialized seminars in many aspects of the craft. So be sure to watch for postings on our site!"

Simple Foam Latex Conversion

If you don't have access to a digital or triple beam scale to weigh your foam components, you can still get by with a set of measuring utensils.

Single Batch: Small Sunbeam Bowl

- 150 Grams Base = Slightly over 1/2 cup Latex Base
- 30 Grams Foaming Agent = 1 Tablespoon Microcellular Foaming Agent
- 15 Grams Curing Agent = 1 Level Teaspoon Curing Agent
- 15 Grams Gelling Agent = 1 Level Teaspoon Gelling Agent

(Note: To adjust gel times, increase or reduce gel in 1/8th to 1/4 teaspoon increments.) Also, be sure not to use measuring utensils for food once they are used for foam components. It's also good practice to wash your hands after handling foam components.

For those of you working in F/X shops or if you just need a large batch of Latex Foam, here are a few starting point run schedules for Monster Makers Foam. Depending on the speed of your mixer, you may need to make some adjustments. Mixing speeds vary slightly from mixer to mixer.

Hobart Mixer Run Schedule

Room temperature 68 degrees; 50 % humidity.

- 2400 Grams High Solids Latex Base
- 480 Grams Animatronic Grade Foaming Agent
- 240 Grams Standard Curing Agent
- 200 Grams Gelling Agent (mixed with 25 drops tint)

Mix at speed 1 for 1 minute.

Froth at speed 2 for 17 minutes (approximately 5 volumes).

Refine / de-ammoniate at speed 1 for 25 minutes.

Add gelling agent approximately 30 seconds; then mix at speed 1 for two minutes. Drop bowl to lower position with mixer running for about 20 seconds during the gel mixing to help mix the neutral foam in the middle of the whip.

This will give you about 25 minutes working time until the foam starts to gel, with gelling pretty much complete at between 30-33 minutes. Prosthetic Foam is typically not run in larger batches but can also be run with the above schedule.

Kitchen Aid Mixer Run Schedule

Room temperature 66 degrees; 50% humidity.

- 450 Grams High Solids Latex Base
- 90 Grams Prosthetic Grade Foaming Agent
- 45 Grams Standard Curing Agent
- 45 Grams Gelling Agent.

Mix at speed 1 (stir) for 1 minute.

Foam at speed 6 for 5 minutes.

De-ammoniate and coarse refine at speed 4 for 15 minutes.

Refine at speed 1 (stir) for 6 minutes.

Add gelling agent over 30 seconds; then continue to mix at speed 1 (stir) for an additional 2 minutes.

This schedule will provide about 15 minutes of work time until the beginning of gel, with gelling being completed by about 20 minutes on average.

Weights and Measures

Since the various materials we sell come in powder or liquid forms, the weights for given volumes will vary. For instance: a gallon container filled with water or a water-like material will weigh approximately 7 lbs. The same container filled with our latex filler will weight about 12 lbs. due to the high density of the compound. Some materials may not always fill a container due to the specific ratios required for the mixture or space left intentionally for shaking the material back into solution as with, for example, some of the foam latex materials. Here is guide to help you relate to the various material quantities that we sell:

1 oz. =	approx. 28 grams (16th lb.)	1/8 cup
2 oz. =	approx. 56 grams (1/8 lb.)	1/4 cup
4 oz. =	approx. 113 grams (1/4 lb.)	1/2 cup
8 oz. =	approx. 227 grams (1/2 lb.)	1 cup
16 oz. =	approx. 454 grams (1 lb.)	1 pint
32 oz. =	approx. 908 grams (2 lbs.)	1 quart
64 oz. =	approx. 1,816 grams (4 lbs.)	1/2 gallon
128 oz. =	approx. 3,632 grams (8 lbs.)	1 gallon
640 oz. =	approx. 17,920 grams (40 lbs.)	5 gallon

Catalog Photo Credits:

Page 5- Lunarctic mask by Dave Brittan.

Page 6- Sculpture by Steve DiRuggiero.

Pages 13, 14 - Mask painter, Marty Kukla.

Page 15 - Foam Prosthetic, "Dagda" by Doug Henderson. From the Scorpio Pictures film, "Max Magician and the Legend of the Ring."

Page 17 - Upper right: Steve Tolin applies the Dagda Latex foam prosthetic for Max Magician.

Page 18 - Lower right: Doug Henderson foam latex Demon make-up.

Pages 21,22 - Andy Stewart undergoing a lifecast.

Page 27 - Upper left and center right: John Pinkerton arms and prop mask. Lower right: Foam wall mount by Steve DiRuggiero.

Page 29 - Silicone witch created by Dan Thompson, John Pinkerton and Arnold Goldman.

Page 30 - Greg McDougall applying gelatin burn make-up to willing victim Carrie Finken.

Page 48 - Upper left image: Rick Stern lectures at the Monster Makers Animatronic Seminar.



The Monster Makers Today, there are numerous educational opportunities and career possibilities for anyone interested in the three dimensional arts. The term, "Three Dimensional Arts" is a catch all term that we use to distinguish the fields and techniques used in the creation of a physical object of art as opposed to the simulation of three dimensions (height, width and depth) through the use of CGI. We often get asked by our customers, "where and how can I learn the techniques required to become a working Special Effects Artist? Our answer is usually lengthy. But to summarize, we suggest starting out with some of the books and videos listed in our catalog to get your feet wet. At the same time it is a good idea to take a hard look at what is being created by other people already working in the field(s) that inspired you to

begin exploring in the first place. Next, start applying what you've learned by making some masks, props, sculptures or 3-D make-ups. These are all projects that require you to practice some basic techniques on your own. After completing some of these projects, you'll know if you want to continue. If so, than in addition to the seminars offered at our facility in Cleveland, consider some of the different educational options available through the schools listed below and two very excellent courses offered by mail though the legendary make-up artist, Dick Smith. Most importantly, have fun in the process. Relax and let your creativity fly. In doing so, you'll surely make your dreams come true!

Art Institute of Pittsburgh

Industrial Design Technology (IDT Program)

AIP offers a two and 4 year program in Industrial Design Technology. IDT as it is known, is an art career in three dimensions, combining creative ideation, refined technical skills, and artistic application of design. It encompasses the design of products and toys, as well as automotive, museum exhibit, and even includes the creation of special effects make-up and theatrical props for film and television. Students of IDT participate in the full evolution of projects, from conception and design to fabrication and presentation. Upon graduation, an associate's degree student's portfolio focuses on the creativity, knowledge, and technical skills necessary for an entry-level position in the three-dimensional design industry while a bachelor's degree graduate opportunities include entry-level positions with exhibit design firms, industrial design studios, model-making companies, advertising agencies, television and movie production companies, manufacturing facilities, environmental design agencies, and architectural firms. More info can be found at the AIP website: <http://www.aip.aii.edu> or call: 1-800-275-2470



Douglas Education Center

Tom Savini Special Make-up Effects Program

This sixteen-month program is designed to provide graduates with the skills necessary for a career in the special make-up effects and show design businesses. The program of study develops competency in the four skill areas of special effects: 1) Make-Up Application, 2) Mold Making & Casting, 3) Animation Fabrication, 4) Exhibit and Display Design. Graduates are prepared for careers with special effects labs, toy manufacturers, architectural restoration firms, amusement parks, entertainment design and fabrication companies, museums and prosthetic sculpting and mold making studios to name a few. Tom Savini, himself, monitors the portfolio process to ensure proper competency development. Each student will undergo a portfolio review to confirm career readiness. Qualifying portfolios will receive a certificate of excellence signed by Tom Savini. More information can be found at the Douglas Education Center Website: <http://www.douglas-school.com/pages/savini.html> Or by phone at: 724.684-3684. Douglas Education Center is located in Monessen, PA.



Dick Smith's Advanced Professional Make-Up Course

Just in case you don't recognize the very pleasant gentleman sitting to the left, that is of course, none other than Oscar winning Make-up artist, Dick Smith. Dick is a friend of ours and mentor to hundreds of make-up artists from around the globe. A make-up artist for over 57 years, Dick is highly regarded and one of the most respected make-up artists in the industry. Though he is now semi retired, Dick offers a fantastic course called **ADVANCED PROFESSIONAL MAKE-UP**. Dick's course took him nearly two years of full-time writing and research and has been extensively updated to stay current with new developments. It now devotes 29 pages to recent silicone appliance technology. Since the Course is not a school, you can study it anywhere. It has been studied by artists in 34 countries around the world and comes highly recommended by **Rick Baker, Stan Winston** and numerous other world famous make-up artists. The course is a massive compendium (700 pages) for home study of all the arts and crafts of character make-up and special effects and is an incredibly detailed tool that you can refer to now and for years to come. The text has black & white illustrations and diagrams and comes with a set of 80 color slides that illustrate special make-ups and techniques. A video with excellent close-ups shows all the steps in the application of a typical prosthetic make-up on Hal Holbrook as Abraham Lincoln. As a special feature of the course, Dick provides personal guidance and advice, not only on technical matters but also on advancing your make-up career for years to come. As one of Dick's students you can phone or e-mail him during the day or evening whenever you have a question or problem. New students receive Dick's phone number and E-mail address. For extensive info on this course and a new course called **BASIC 3-D MAKE-UP**. See Dick's website at: <http://www.dicksmithmake-up.com> You can also reach him by mail at: Dick Smith, 27 Wilford Ave., Branford, CT 06405.

\$5.00



The Monster Makers
7305 Detroit Ave.
Cleveland, OH 44102

Phone: 216-651-(SPFX) 7739 Fax: 216-631-(4FAX) 4329

web: www.monstermakers.com

e-mail: sales@monstermakers.com